

16/2005

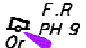
South Western Approaches – Hong Kong International Airport – Floating barrier

Source – HK Hydrographic Office [L/M 9 in PA/S/HO 108/1/7 (9)]

Chart HK1503 (Last Small Correction – 6/2005)

Insert the accompanying block, showing 22° 18.583' N 113° 52.939' E
establishment of buoyed floating barrier,
centred on:

Chart HK3002 (Last Small Correction – 12/2005)

Insert  22° 18.665' N 113° 53.227' E

Insert legend,  centred on : 22° 18.636' N 113° 52.939' E

16/2005

西南臨近水域 - 香港國際機場 - 浮柵欄

出處 -

香港海道測量部 [L/M 9 in PA/S/HO 108/1/7 (9)]

海圖 HK1503

(上次小改正 - 6/2005)

加繪

隨附貼圖，中心點為：
顯示設置浮柵欄

22° 18.583' N 113° 52.939' E

海圖 HK3002

(上次小改正 - 12/2005)

加繪



22° 18.665' N 113° 53.227' E

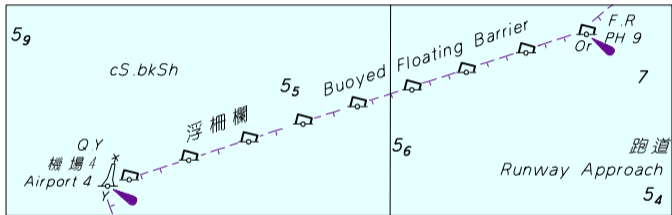
加繪

註記, ^{浮柵欄} Buoyed Floating Barrier, 中心點為:

22° 18.636' N 113° 52.939' E

附隨香港航海通告編號 16/2005

To accompany HK Notice to Mariners No. 16/2005



此貼圖適用於海圖編號 HK1503

Block for Chart No. HK1503