

A

**Temporary Notice (T)**

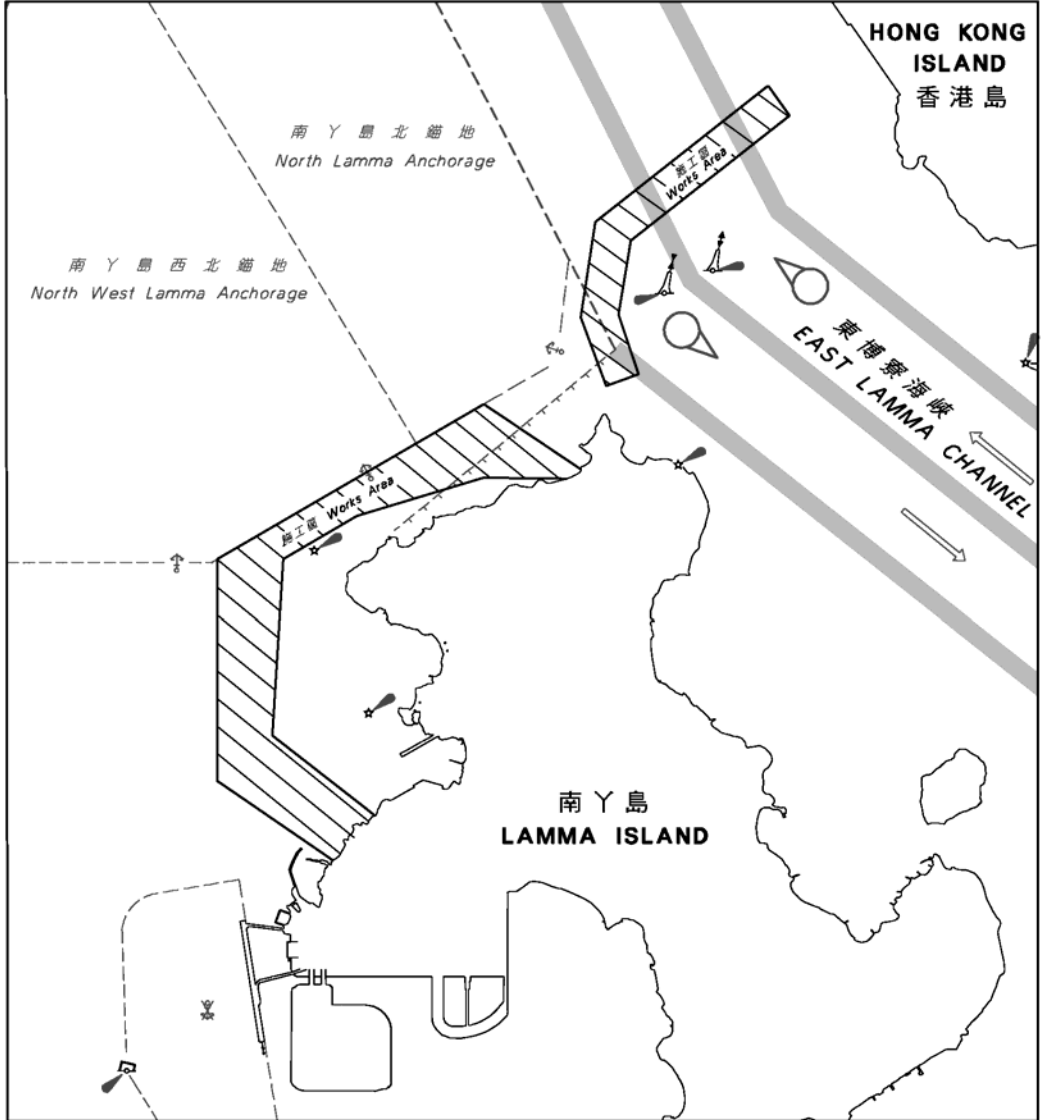
**31(T)/2005**

**East Lamma Channel – Preparatory works for laying of submarine cable**

Source: Hong Kong Marine Department Notice No.126 of 2005 refers. Preparatory works for laying of submarine cable is being carried out in the hatched areas.

Working Period: 7 months starting 18 August 2005

Chart Affected: HK1501



不宜作航行用途  
NOT TO BE USED FOR NAVIGATION

A

# 臨時通告(T)

31(T)/2005

## 南丫島以北及東博察海峽 - 敷設海底電纜初期工程

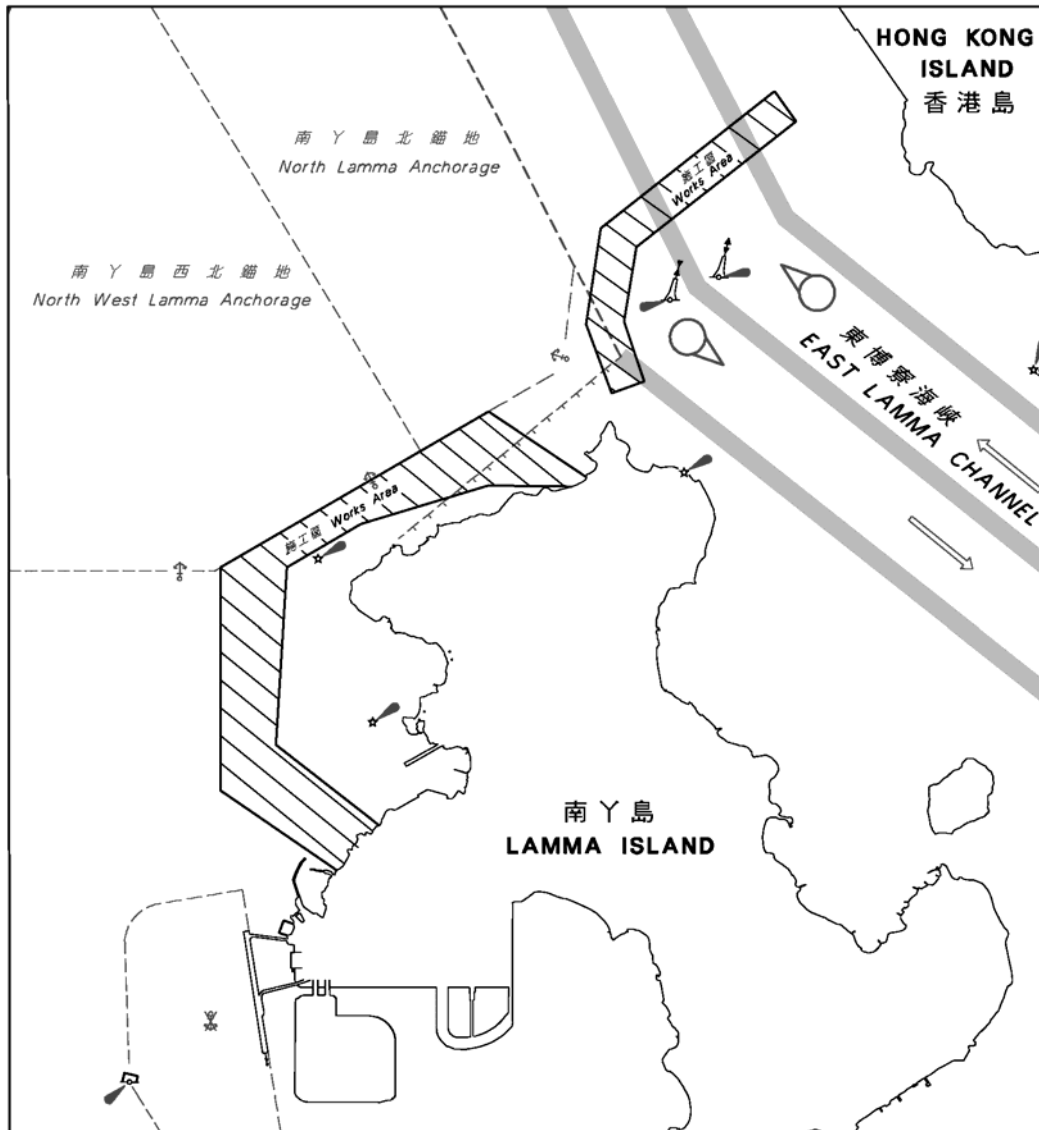
參考香港海事處佈告2005年第126號。附圖陰影線標示施工範圍。

施工期:

2005年8月18日起7個月。

有關海圖:

HK1501



不宜作航行用途  
NOT TO BE USED FOR NAVIGATION