

Chart Correction

38/2005 **South Western Approaches – Tai O – Depths and shoreline**

Source – HK Hydrographic Office [L/M 25 in PA/S/HO 108/1/7 (9)]

Chart HK3002 (Last Small Correction – 36/2005)

Insert the accompanying block, showing change of 22° 15.049' N 113° 51.400' E
depths and shoreline, centred on:

海圖改正

38/2005

西南臨近水域 - 大澳 - 水深及海岸線

出處 -

香港海道測量部 [L/M 25 in PA/S/HO 108/1/7 (9)]

海圖 HK3002

(上次小改正 - 36/2005)

加繪

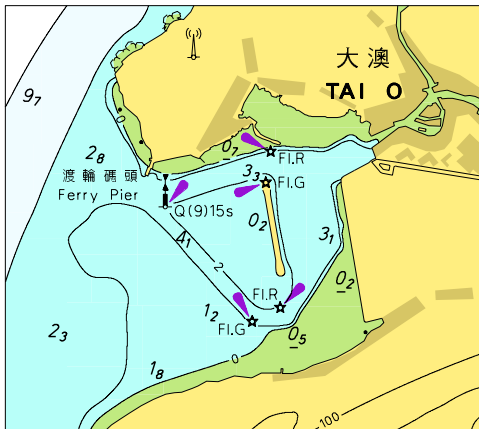
隨附貼圖，中心點為：

22° 15.049' N 113° 51.400' E

顯示已改變的水深及海岸線

附隨香港航海通告編號 38/2005

To accompany HK Notice to Mariners No. 38/2005



此貼圖適用於海圖編號 HK3002

Block for Chart No HK3002