

28/2007

Harbour – Western Part – West Tsing Yi – Floating Dock and Depths

Source –

HK Hydrographic Office [W/F No. 21 in MDPAS/HO 6-20-2(2)]

Chart HK0803

(Last Small Correction – 16/2007)

Insert

the accompanying block, showing the relocated floating dock “Yiu Lian No. 3” and change of depths, centred on: 22° 20.041' N 114° 05.319' E

28/2007

海港西部 - 青衣西 - 浮塢及水深

出處 -

香港海道測量部 [W/F No. 21 in MDPAS/HO 6-20-2 (2)]

海圖 HK0803

上次小改正 - 16/2007

加繪

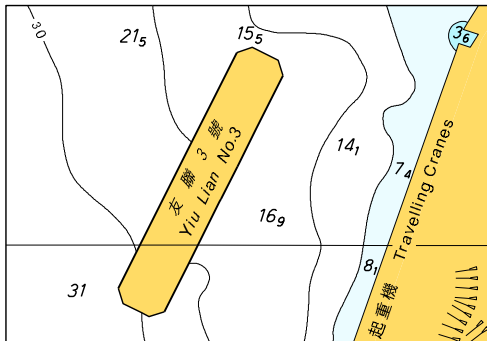
隨附貼圖，中心點為：

22° 20.041' N 114° 05.319' E

顯示重置的“友聯 3 號浮塢”及已改變的水深

附隨香港航海通告編號 28/2007

To accompany HK Notice to Mariners No.28/2007



此貼圖適用於海圖編號 HK0803

Block for Chart No. HK0803