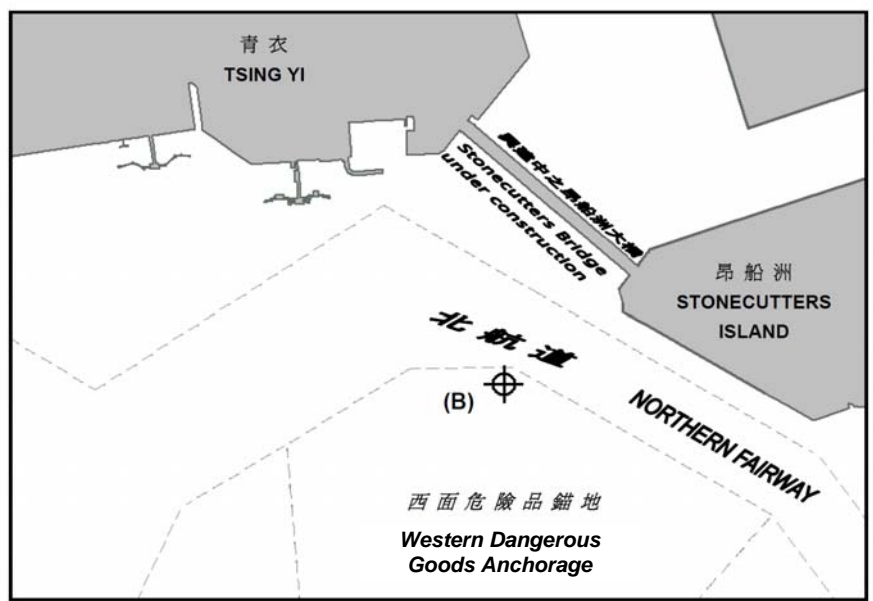
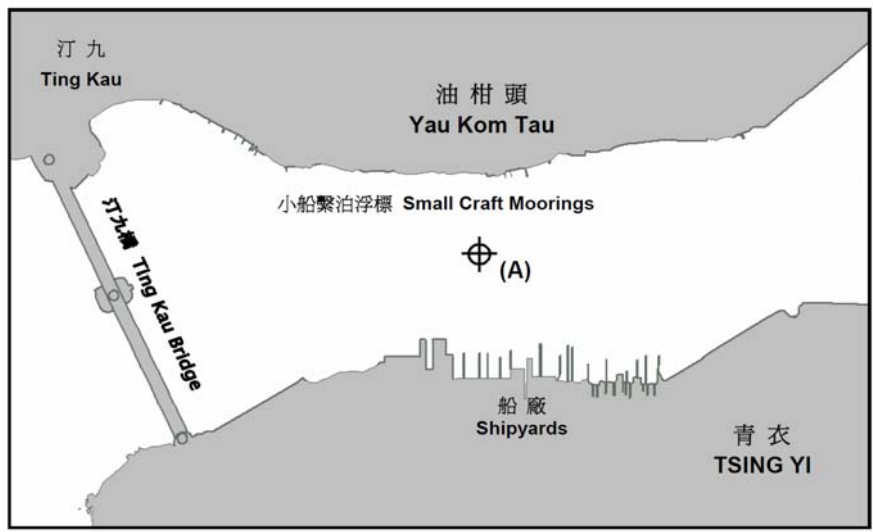


14(T)/2009

Ma Wan and Approaches – Yau Kom Tau and Western Dangerous Goods Anchorage

Source: Hong Kong Marine Department Notice No. 62 of 2009 refers.
The attached plans show the temporary establishment of current meter in locations (A) Yau Kom Tau, and, (B) Western Dangerous Goods Anchorage.
Chart Affected HK0803, HK1502



14(T)/2009

出處 -

有關海圖:

馬灣及臨近水域 - 油柑頭及西面危險品錨地 - 臨時設置流速儀

參考香港海事處佈告 2009 年第 62 號。

附圖標示臨時設置流速儀的位置: (A)油柑頭, 及 (B)西面危險品錨地。

HK0803, HK1502

