

31/2010 **Lingding Yang – Qingzhou Traffic Separation Scheme – traffic separation scheme, lighted buoy.**

Source – China MSA Bulletin No. 2/2010

Chart HK7501 (Last Small Correction – 21/2010)

Insert the accompanying block, showing changes of traffic separation scheme and lighted buoy, centred on: 22° 11.211' N 113° 44.182' E

31/2010

伶仃洋 - 青洲分道航行制 - 分道航行制, 設燈浮標

出處 -

中國海事局公告第 2/2010 號

海圖 HK7501

(上次小改正 - 21/2010)

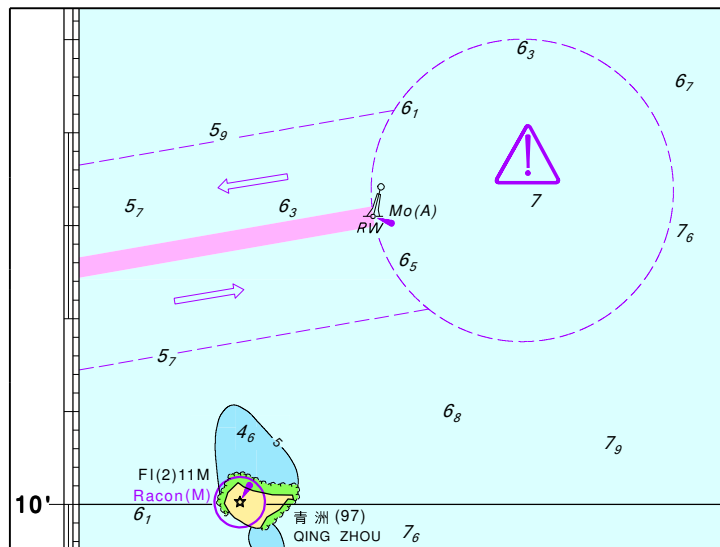
加貼

隨附貼圖, 中心點為:

22° 11.211' N 113° 44.182' E

顯示已改變的分道航行制及設燈浮標

附隨香港航海通告編號 31/2010
To accompany HK Notice to Mariners No.31/2010



此貼圖適用於海圖編號HK7501
Block for Chart No. HK7501