

9/2010

Mirs Bay – Lighted buoy.

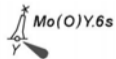
Source –

China MSA Notice No. 88/2010

Chart HK3001

(Last Small Correction – 3/2010)

Insert



22° 35.250' N 114° 20.083' E

9/2010

大鵬灣 - 設燈浮標

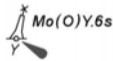
出處 -

中國海事局改正通告第 88/2010 號

海圖 HK3001

(上次小改正 - 3/2010)

加繪



22° 35.250' N 114° 20.083' E