

## **NOTICES TO MARINERS**

**3 April 2008**

---

### **CONTENTS**

- I General Notes / Index of Charts Affected
  - II Publications Affected and Chart Corrections
  - III Marine Information
  - IV Reprints of Navigational Warnings (NAVTEX)
- 

The Hydrographer  
Hydrographic Office  
Marine Department  
2/F Hydro Building  
Government Dockyard  
Stonecutters Island, Kowloon  
HONG KONG

Tel : (852) 2504 0723  
Fax : (852) 2504 4527  
E-mail : [hydro@mardep.gov.hk](mailto:hydro@mardep.gov.hk)  
Website : [www.hydro.gov.hk](http://www.hydro.gov.hk)

**SECTION I**  
**GENERAL NOTES**

- 1 Notices to Mariners are issued fortnightly on a Friday. A summary of temporary notices and a chart correction record (issued every six months) are published in Issue No 13 and 26 of Notices to Mariners.
- 2 Positions on Hong Kong Charts are referred to the World Geodetic System 1984 (WGS 84) Datum.
- 3 Depths are measured in metres and are reduced to Chart Datum, which is approximately the Lowest Astronomical Tide (LAT).
- 4 Heights and spot heights are measured in metres above the High Water Mark (HWM).
- 5 Navigational marks are based on the IALA Maritime Buoyage System (Region A) – ie Red to Port, Green to Starboard.
- 6 Continuous Differential Global Positioning System (DGPS) correction signals for WGS 84 positions are broadcast by the Hydrographic Office on 289.0 kHz and can be received by any vessel with a standard DGPS receiver. For technical details of the system, please refer to the following webpage:

**[www.hydro.gov.hk/service/dgps.htm](http://www.hydro.gov.hk/service/dgps.htm)**

- 7 Hong Kong charts are available for sale at the Marine Department:

**Shroff Office, Marine Department**

Room 309, Harbour Building

38 Pier Road, Central

HONG KONG

Tel : (852) 2852 3087

Fax : (852) 2542 4287

For overseas orders and mail services, please contact the Hydrographic Office:

**Hydrographic Office**

2/F Hydro Building

Government Dockyard

Stonecutters Island, Kowloon

HONG KONG

Tel : (852) 2504 0723

Fax : (852) 2504 4527

E-mail : [hydro@mardep.gov.hk](mailto:hydro@mardep.gov.hk)

- 8 Copies of the Notices To Mariners can be downloaded from the following webpage:

**[www.hydro.gov.hk/product/ntm.htm](http://www.hydro.gov.hk/product/ntm.htm)**







**SECTION II**  
**PUBLICATION AFFECTED AND CHART CORRECTIONS**

**Chart Correction**

**10/2008**            **Deep Bay – Northern Fairway – Anchorage limits, buoys, legend.**

Source –            China MSA Notices No. 1131/2007, 18/2008, 19/2008 & 65/2008

**Chart HK1504**    (Last Small Correction – 1/2008)

Insert	the accompanying block, showing change of anchorage limits, buoys and legend, centre on:	22° 27.387' N    113° 52.343' E
	 <i>Fl(2)R.6s (1)</i>	22° 26.563' N    113° 52.087' E
	 <i>Fl(2)G.6s (2)</i>	22° 26.308' N    113° 52.575' E
Move	 <i>Fl(2)R.6s No.2</i>	From: 22° 26.681' N    113° 53.212' E To: 22° 26.720' N    113° 53.162' E
Delete	limit of anchorage area,  , joining:	22° 26.389' N    113° 52.659' E 22° 26.389' N    113° 51.960' E

---

**SECTION III**  
**MARINE INFORMATION**

**A Temporary Notice (T)**

Nil

---

**B Cancelled Temporary Notice (T)**

Nil

---

**SECTION IV**  
**REPRINTS OF NAVIGATIONAL WARNINGS (NAVTEX)**

The following navigational warning is still in force on 28 March 2008:

LA03/2008            Positions of rigs and support vessels north of 10° 00' N in the South China Sea:

Rig	HUI ZHOU 19 - 2	21° 21.97' N	115° 04.98' E
Rig	H Z 19 - 3	21° 21.16' N	115° 01.02' E
Rig	H Z 21 - 1	21° 20.95' N	115° 25.37' E
Rig	H Z 21 - 1B	21° 20.92' N	115° 25.34' E
Rig	H Z 26 - 1	21° 10.55' N	115° 15.88' E
Rig	H Z 32 - 2	21° 09.68' N	115° 10.19' E
Rig	H Z 32 - 3	21° 09.87' N	115° 13.09' E
Rig	LU FENG 13 - 1	21° 35.27' N	116° 09.42' E
Rig	LU FENG 13 - 2	21° 37.85' N	116° 03.21' E
Rig	PAN YU 4 - 2	20° 50.84' N	114° 37.09' E
Rig	PAN YU 5 - 1	20° 51.34' N	114° 47.93' E
Rig	XI JIANG 23 - 1	21° 21.05' N	114° 42.99' E
Rig	X J 24 - 3	21° 22.75' N	114° 54.69' E
Rig	X J 30 - 2	21° 16.30' N	114° 58.53' E
Rig	WAI ZHOU 6 - 1	20° 54.63' N	108° 51.88' E
Rig	W Z 11- 1	20° 47.78' N	108° 43.47' E
Rig	W Z 11 - 4 A	20° 40.84' N	108° 40.90' E
Rig	W Z 11 - 4 B	20° 40.39' N	108° 40.09' E
Rig	W Z 11 - 4 C	20° 41.04' N	108° 42.45' E
Rig	W Z 11 - 4 N	20° 45.32' N	108° 45.25' E
Rig	W Z 12 - 1 A	20° 48.98' N	108° 53.91' E
Rig	W Z 12 - 1 B	20° 50.20' N	108° 54.01' E
Rig	WEN CHANG 13 - 1	19° 37.77' N	112° 04.01' E
Rig	WEN CHANG 13 - 2	19° 34.92' N	112° 01.17' E
Rig	W C 19 - 1 A	19° 25.92' N	112° 05.43' E
Rig	W C 19 - 1 B	19° 22.98' N	112° 05.45' E
Rig	W C 15 - 1	19° 32.02' N	112° 26.34' E
Rig	W C 14 - 3	19° 37.45' N	112° 16.61' E
Rig	W C 8 - 3	19° 45.75' N	112° 11.24' E
Rig	DONG FANG 1 - 1 A	18° 34.53' N	107° 43.64' E
Rig	D F 1 - 1 B	18° 36.09' N	107° 40.48' E
Rig	D F 1 - 1 D	18° 36.87' N	108° 40.90' E
Rig	D F 1 - 1 E	18° 37.26' N	107° 45.55' E
Rig	YA CHENG 13 - 1	17° 30.54' N	109° 01.48' E
Rig	NAN SHAN	18° 18.43' N	109° 08.87' E
Rig	LE DONG 22 - 1	17° 33.27' N	108° 35.53' E
Rig	L D 15 - 1	17° 36.79' N	108° 24.60' E
Rig & Tanker	NAN HAI TIAO ZHAN	20° 49.54' N	115° 42.01' E
Rig & Tanker	W Z 11 - 4 D	20° 48.80' N	108° 37.47' E
Storage tanker	HAI YANG 111	20° 51.09' N	114° 42.51' E
Storage tanker	NAN HAI FA XIAN	21° 21.65' N	115° 24.64' E
Storage tanker	NAN HAI KAI TUO	21° 18.41' N	114° 56.30' E
Storage tanker	NAN HAI SHENG KAI	21° 36.05' N	116° 08.90' E
Storage tanker	NAN HAI SHENG LI	20° 50.87' N	115° 41.00' E

Storage tanker	NAVION MUNIN	21° 28.70' N	116° 38.49' E
Storage tanker	NAM HAI FEN JIN	19° 36.69' N	112° 02.77' E
Storage tanker	WEI ZHOU	21° 02.53' N	109° 05.09' E
Storage tanker	KAN TAN NO.3	20° 44.18' N	114° 34.48' E

All vessels should keep well clear of these rigs and support vessels.

---

**故意留出的空白頁**  
**Page intentionally left blank**

# 香港海圖索引 HONG KONG CHART INDEX



**水文短訊**  
**Hydrographic Note**

航海人員如發現新的危險礙航物，或輔航設備有所改變或損壞，請通知海道測量部。  
Mariners are requested to inform Hydrographic Office, Hong Kong discovery of new dangers to navigation, or changes or defects of aids to navigation.

日期 \_\_\_\_\_ 檔號 \_\_\_\_\_  
Date \_\_\_\_\_ Ref \_\_\_\_\_

船名 \_\_\_\_\_ 目擊者/舉報者姓名 \_\_\_\_\_  
Name of Vessel \_\_\_\_\_ Name of Observer/Reporter \_\_\_\_\_

通訊地址 \_\_\_\_\_  
Correspondence \_\_\_\_\_  
Address \_\_\_\_\_

電郵地址 \_\_\_\_\_  
E-mail Address \_\_\_\_\_

事項 \_\_\_\_\_  
Subject \_\_\_\_\_

概位 \_\_\_\_\_ 緯度 \_\_\_\_\_ 經度 \_\_\_\_\_  
Approx Position \_\_\_\_\_ Lat \_\_\_\_\_ Long \_\_\_\_\_

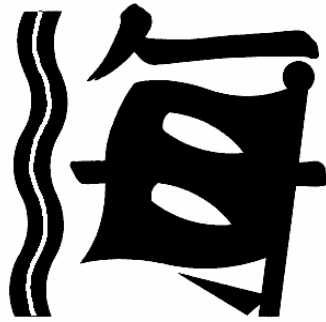
地理位置(如適用) \_\_\_\_\_  
Geographic Position \_\_\_\_\_  
(if applicable) \_\_\_\_\_

詳細內容 \_\_\_\_\_  
Details \_\_\_\_\_

所持最新航海通告 \_\_\_\_\_  
Latest Notices to Mariners Held \_\_\_\_\_

有關刊物(期數、最近的補編日期) \_\_\_\_\_  
Publication(s) Affected (edition number \_\_\_\_\_  
and date of latest supplement) \_\_\_\_\_

目擊者/舉報者簽署 \_\_\_\_\_  
Signature of Observer/Reporter \_\_\_\_\_



中國 香港

航海通告

2008年4月3日

---

目錄

- I 一般事項/有關海圖索引
- II 有關刊物與海圖改正
- III 海事訊息
- IV 航行警告重印(航行警告電傳)

---

海道測量師  
海事處  
海道測量部  
香港九龍  
昂船洲政府船塢  
海測樓二樓

電話：(852) 2504 0723  
傳真：(852) 2504 4527  
電郵：[hydro@mardep.gov.hk](mailto:hydro@mardep.gov.hk)  
網址：[www.hydro.gov.hk](http://www.hydro.gov.hk)

## 第 I 節 一般事項

- 1 航海通告在每隔兩周的星期五發佈。臨時通告摘要及海圖改正記錄（每6個月發佈一次）在航海通告第13及26期刊載。
- 2 在香港海圖上的位置乃參照 1984 年世界大地測量系統（WGS 84）基準。
- 3 深度量度自海圖基準，並以米為單位。此基準與最低天文潮相若。
- 4 高度、高程點皆自高潮標以上計算，以米為單位。
- 5 輔航標記是根據國際航標協會海上浮標系統（A區域）－紅在左舷，綠在右舷。
- 6 差分全球定位系統校正訊號由海道測量部以 289.0 千赫不停廣播，此訊號適用於以 WGS 84 為基準的位置，凡裝有標準接收器的船舶，均可接收。關於此系統的技術規格，請參閱以下網頁：

**[www.hydro.gov.hk/service/dgps.htm](http://www.hydro.gov.hk/service/dgps.htm)**

- 7 香港海圖在海事處有售：

### **海事處繳費處**

香港中環  
統一碼頭道38號  
海港政府大樓309室  
電話：(852) 2852 3087  
傳真：(852) 2542 4287

有關香港海圖的海外訂購及郵寄服務，請向海道測量部查詢：

### **海道測量部**

香港九龍  
昂船洲政府船塢  
海測樓二樓  
電話：(852) 2504 0723  
傳真：(852) 2504 4527  
電郵：[hydro@mardep.gov.hk](mailto:hydro@mardep.gov.hk)

- 8 航海通告可在以下網頁下載：

**[www.hydro.gov.hk/product/ntm.htm](http://www.hydro.gov.hk/product/ntm.htm)**







## 第 II 節 有關刊物與海圖改正

### 海圖改正

10/2008 后海灣 - 北航道 - 錨地界線，浮標，註記

出處 - 中國海事局改正通告第 1131/2007，18/2008，19/2008 及 65/2008 號

海圖 HK1504 (上次小改正 - 1/2008)

加繪	隨附貼圖，中心點為： 顯示已改變的錨地界線，浮標及註記	22° 27.387' N	113° 52.343' E
	 <i>Fl(2)R.6s (1)</i>	22° 26.563' N	113° 52.087' E
	 <i>Fl(2)G.6s (2)</i>	22° 26.308' N	113° 52.575' E
移動	 <i>Fl(2)R.6s No.2</i>	原位置：22° 26.681' N	113° 53.212' E
		新位置：22° 26.720' N	113° 53.162' E
刪去	錨地界線,  , 連接:	22° 26.389' N	113° 52.659' E
		22° 26.389' N	113° 51.960' E

第 III 節  
海事訊息

A 臨時通告(T)

無

---

B 已撤銷的臨時通告(T)

無

---

---

**故意留出的空白頁**  
**Page intentionally left blank**

## 第 IV 節

### 航行警告重印(航行警告電傳)

在 2008 年 3 月 28 日仍然有效的航行警告如下:

LA03/2008

南海 10°00' N 以北的鑽井平台及支援船位置一覽表:

鑽井平台	惠州 19-2 平台	21° 21.97' N	115° 04.98' E
鑽井平台	惠州 19-3 平台	21° 21.16' N	115° 01.02' E
鑽井平台	惠州 21-1 平台	21° 20.95' N	115° 25.37' E
鑽井平台	惠州 21-1B 平台	21° 20.92' N	115° 25.34' E
鑽井平台	惠州 26-1 平台	21° 10.55' N	115° 15.88' E
鑽井平台	惠州 32-2 平台	21° 09.68' N	115° 10.19' E
鑽井平台	惠州 32-3 平台	21° 09.87' N	115° 13.09' E
鑽井平台	陸丰 13-1 平台	21° 35.27' N	116° 09.42' E
鑽井平台	陸丰 13-2 平台	21° 37.85' N	116° 03.21' E
鑽井平台	番禺 4-2 平台	20° 50.84' N	114° 37.09' E
鑽井平台	番禺 5-1 平台	20° 51.34' N	114° 47.93' E
鑽井平台	西江 23-1 平台	21° 21.05' N	114° 42.99' E
鑽井平台	西江 24-3 平台	21° 22.75' N	114° 54.69' E
鑽井平台	西江 30-2 平台	21° 16.30' N	114° 58.53' E
鑽井平台	濶洲 6-1	20° 54.63' N	108° 51.88' E
鑽井平台	濶洲 11-1 平台	20° 47.78' N	108° 43.47' E
鑽井平台	濶洲 11-4 A	20° 40.84' N	108° 40.90' E
鑽井平台	濶洲 11-4 B	20° 40.39' N	108° 40.09' E
鑽井平台	濶洲 11-4 C	20° 41.04' N	108° 42.45' E
鑽井平台	濶洲 11-4 N	20° 45.32' N	108° 45.25' E
鑽井平台	濶洲 12-1 A	20° 48.98' N	108° 53.91' E
鑽井平台	濶洲 12-1 B	20° 50.20' N	108° 54.01' E
鑽井平台	文昌 13-1	19° 37.77' N	112° 04.01' E
鑽井平台	文昌 13-2	19° 34.92' N	112° 01.17' E
鑽井平台	文昌 19-1 A	19° 25.92' N	112° 05.43' E
鑽井平台	文昌 19-1 B	19° 22.98' N	112° 05.45' E
鑽井平台	文昌 15-1	19° 32.02' N	112° 26.34' E
鑽井平台	文昌 14-3	19° 37.45' N	112° 16.61' E
鑽井平台	文昌 8-3	19° 45.75' N	112° 11.24' E
鑽井平台	東方 1-1 A	18° 34.53' N	107° 43.64' E
鑽井平台	東方 1-1 B	18° 36.09' N	107° 40.48' E
鑽井平台	東方 1-1 D	18° 36.87' N	108° 40.90' E
鑽井平台	東方 1-1 E	18° 37.26' N	107° 45.55' E
鑽井平台	崖城 13-1	17° 30.54' N	109° 01.48' E
鑽井平台	南山終端	18° 18.43' N	109° 08.87' E
鑽井平台	樂東 22-1	17° 33.27' N	108° 35.53' E
鑽井平台	樂東 15-1	17° 36.79' N	108° 24.60' E
鑽井平台及油船	南海挑戰 (流花 11-1)	20° 49.54' N	115° 42.01' E
鑽井平台及油船	自強號 / 濶洲 11-4 D	20° 48.80' N	108° 37.47' E
貯油船	海洋 111 號終端	20° 51.09' N	114° 42.51' E
貯油船	南海發現號終端	21° 21.65' N	115° 24.64' E

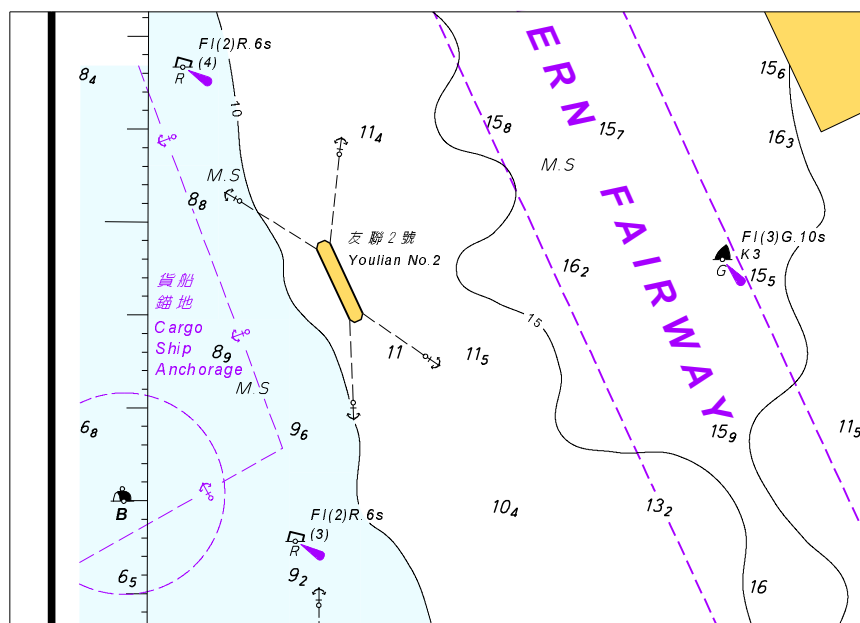
貯油船	南海開拓號終端	21° 18.41' N	114° 56.30' E
貯油船	南海盛開號終端	21° 36.05' N	116° 08.90' E
貯油船	南海勝利號終端	20° 50.87' N	115° 41.00' E
貯油船	睦寧號油輪	21° 28.70' N	116° 38.49' E
貯油船	南海奮進號	19° 36.69' N	112° 02.77' E
貯油船	潤洲終端	21° 02.53' N	109° 05.09' E
貯油船	勘探 3 號	20° 44.18' N	114° 34.48' E

所有船舶務請遠離這些鑽井平台及支援船。

---

附隨香港航海通告編號 10/2008

To accompany HK Notice to Mariners No. 10/2008



此貼圖適用於海圖編號 HK1504  
Block for Chart No. HK1504