

NOTICES TO MARINERS

18 October 2007

CONTENTS

- I General Notes / Index of Charts Affected
- II Publications Affected and Chart Corrections
- III Marine Information
- IV Reprints of Navigational Warnings (NAVTEX)

The Hydrographer
Hydrographic Office
Marine Department
2/F Hydro Building
Government Dockyard
Stonecutters Island, Kowloon
HONG KONG

Tel : (852) 2504 0723
Fax : (852) 2504 4527
E-mail : hydro@mardep.gov.hk
Website : www.hydro.gov.hk

SECTION I
GENERAL NOTES

- 1 Notices to Mariners are issued fortnightly on a Friday. A summary of temporary notices and a chart correction record (issued every six months) are published in Issue No 13 and 26 of Notices to Mariners.
- 2 Positions on Hong Kong Charts are referred to the World Geodetic System 1984 (WGS 84) Datum.
- 3 Depths are measured in metres and are reduced to Chart Datum, which is approximately the Lowest Astronomical Tide (LAT).
- 4 Heights and spot heights are measured in metres above the High Water Mark (HWM).
- 5 Navigational marks are based on the IALA Maritime Buoyage System (Region A) – ie Red to Port, Green to Starboard.
- 6 Continuous Differential Global Positioning System (DGPS) correction signals for WGS 84 positions are broadcast by the Hydrographic Office on 289.0 kHz and can be received by any vessel with a standard DGPS receiver. For technical details of the system, please refer to the following webpage:

www.hydro.gov.hk/service/dgps.htm

- 7 Hong Kong charts are available for sale at the Marine Department:

Shroff Office, Marine Department

Room 309, Harbour Building

38 Pier Road, Central

HONG KONG

Tel : (852) 2852 3087

Fax : (852) 2542 4287

For overseas orders and mail services, please contact the Hydrographic Office:

Hydrographic Office

2/F Hydro Building

Government Dockyard

Stonecutters Island, Kowloon

HONG KONG

Tel : (852) 2504 0723

Fax : (852) 2504 4527

E-mail : hydro@mardep.gov.hk

- 8 Copies of the Notices To Mariners can be downloaded from the following webpage:

www.hydro.gov.hk/product/ntm.htm

SECTION II
PUBLICATION AFFECTED AND CHART CORRECTIONS

Chart Correction**26/2007** **Urmston Road – Depths**

Source – HK Hydrographic Office [W/F No. 21 in MDPAS/HO 6-20-2(2)]

Chart HK1503 (Last Small Correction – 23/2007)

Insert	depth <i>15</i> ₅	(a) 22° 20.815' N 113° 56.692' E
	depth <i>16</i> ₄	(b) 22° 20.908' N 113° 56.272' E
	depth <i>15</i> ₄	(c) 22° 20.997' N 113° 55.985' E
	15m contour, joining:	(d) 22° 20.731' N 113° 56.835' E (existing contour)
		(e) 22° 20.717' N 113° 56.928' E (existing contour)
Delete	depth <i>14</i> ₁ and associated 15m contour	Close N of (a) above
	depth <i>14</i> ₅ and associated 15m contour	22° 20.857' N 113° 56.534' E
	depth <i>14</i> ₉ and associated 15m contour	Close NW of (b) above
	depth <i>15</i> and associated 15m contour	Close NNW of (c) above
	former 15m contour, joining:	(d) – (e) above

27/2007 Urmston Road – Tuen Mun – Restricted Area and Depths

Source – HK Hydrographic Office [W/F No. 21 in MDPAS/HO 6-20-2(2)]

Chart HK1503 (Last Small Correction – 26/2007)

Insert the accompanying block, showing Tuen Mun 22° 22.239' N 113° 58.053' E
Ferry Terminal restricted area and change of
depths, centred on:

28/2007 Harbour – Western Part – West Tsing Yi – Floating Dock and Depths

Source – HK Hydrographic Office [W/F No. 21 in MDPAS/HO 6-20-2(2)]

Chart HK0803 (Last Small Correction – 16/2007)

Insert the accompanying block, showing the relocated 22° 20.041' N 114° 05.319' E
floating dock “Yiu Lian No. 3” and change of
depths, centred on:

SECTION III
MARINE INFORMATION

A **Temporary Notice (T)**

Nil

B **Cancelled Temporary Notice (T)**

22(T)/2007 Kwai Chung Container Terminal 1 – Dredging operation

SECTION IV
REPRINTS OF NAVIGATIONAL WARNINGS (NAVTEX)

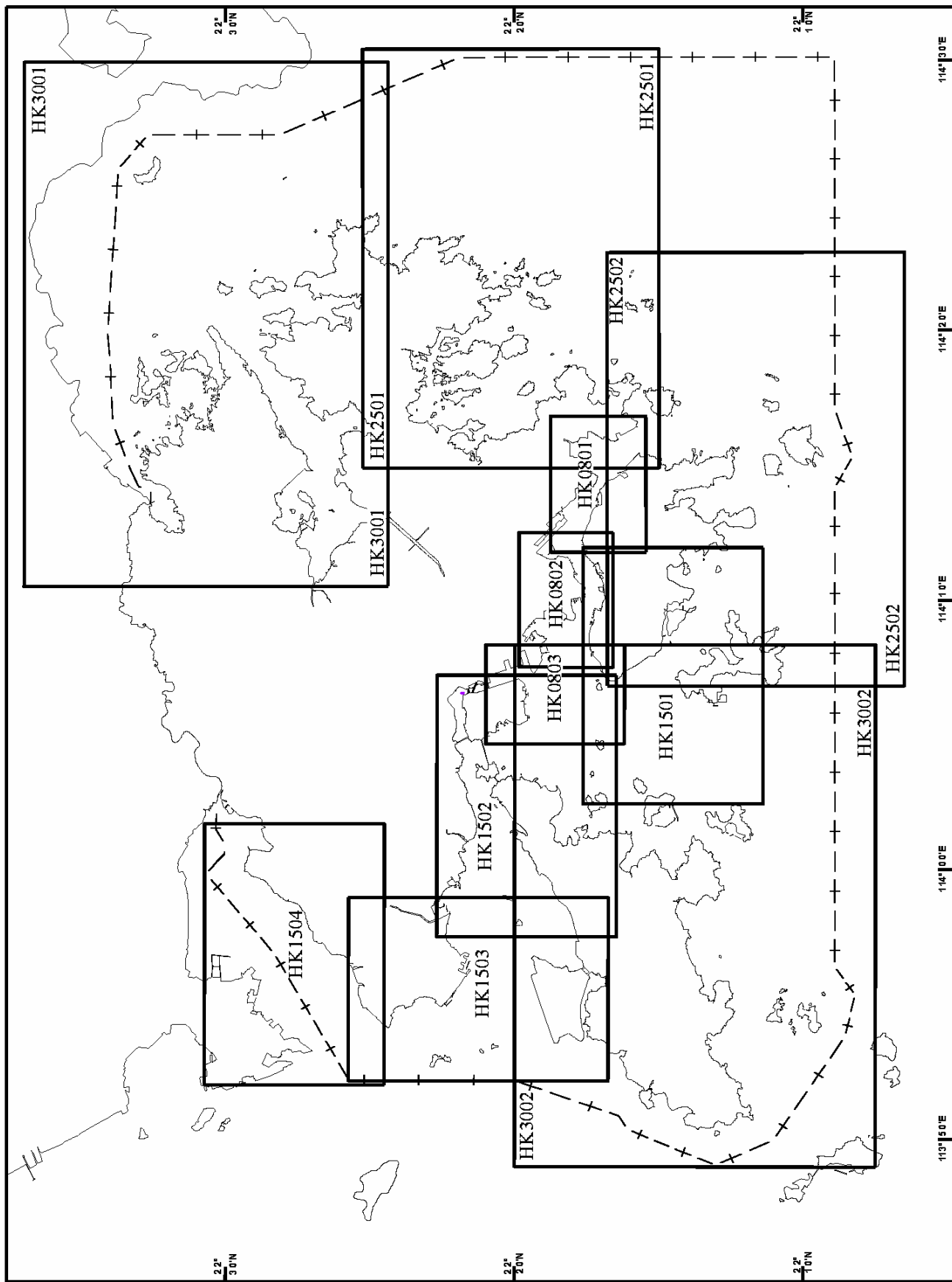
The following navigational warning is still in force on 12 October 2007:

LA13/2007 Positions of rigs and support vessels north of 10° 00' N in the South China Sea:

Rig	HUI ZHOU 19 - 2	21° 21.97' N	115° 04.98' E
Rig	H Z 19 - 3	21° 21.16' N	115° 01.02' E
Rig	H Z 21 - 1	21° 20.95' N	115° 25.37' E
Rig	H Z 21 - 1B	21° 20.92' N	115° 25.34' E
Rig	H Z 26 - 1	21° 10.55' N	115° 15.88' E
Rig	H Z 32 - 2	21° 09.68' N	115° 10.19' E
Rig	H Z 32 - 3	21° 09.87' N	115° 13.09' E
Rig	LU FENG 13 - 1	21° 35.27' N	116° 09.42' E
Rig	LU FENG 13 - 2	21° 37.85' N	116° 03.21' E
Rig	PAN YU 4 - 2	20° 50.84' N	114° 37.09' E
Rig	PAN YU 5 - 1	20° 51.34' N	114° 47.93' E
Rig	XI JIANG 23 - 1	21° 21.05' N	114° 42.99' E
Rig	X J 24 - 3	21° 22.75' N	114° 54.69' E
Rig	X J 30 - 2	21° 16.30' N	114° 58.53' E
Rig	WAI ZHOU 6 - 1	20° 54.63' N	108° 51.88' E
Rig	W Z 11- 1	20° 47.78' N	108° 43.47' E
Rig	W Z 11 - 4 A	20° 40.84' N	108° 40.90' E
Rig	W Z 11 - 4 B	20° 40.39' N	108° 40.09' E
Rig	W Z 11 - 4 C	20° 41.04' N	108° 42.45' E
Rig	W Z 12 - 1 A	20° 48.98' N	108° 53.91' E
Rig	W Z 12 - 1 B	20° 50.20' N	108° 54.01' E
Rig	WEN CHANG 13 - 1	19° 37.77' N	112° 04.01' E
Rig	WEN CHANG 13 - 2	19° 34.92' N	112° 01.17' E
Rig	DONG FANG 1 - 1 A	18° 34.53' N	107° 43.64' E
Rig	D F 1 - 1 B	18° 36.09' N	107° 40.48' E
Rig	D F 1 - 1 D	18° 36.87' N	108° 40.90' E
Rig	D F 1 - 1 E	18° 37.26' N	107° 45.55' E
Rig	YA CHENG 13 - 1	17° 30.54' N	109° 01.48' E
Rig	NAN SHAN	18° 18.43' N	109° 08.87' E
Rig	KAN TAN NO.3	20° 44.18' N	114° 34.48' E
Rig & Tanker	NAN HAI TIAO ZHAN	20° 49.54' N	115° 42.01' E
Rig & Tanker	W Z 11 - 4 D	20° 48.80' N	108° 37.47' E
Storage tanker	HAI YANG 111	20° 51.09' N	114° 42.51' E
Storage tanker	NAN HAI FA XIAN	21° 21.65' N	115° 24.64' E
Storage tanker	NAN HAI KAI TUO	21° 18.41' N	114° 56.30' E
Storage tanker	NAN HAI SHENG KAI	21° 36.05' N	116° 08.90' E
Storage tanker	NAN HAI SHENG LI	20° 50.87' N	115° 41.00' E
Storage tanker	NAVION MUNIN	21° 28.70' N	116° 38.49' E
Storage tanker	NAM HAI FEN JIN	19° 36.69' N	112° 02.77' E
Storage tanker	WEI ZHOU	21° 02.53' N	109° 05.09' E

All vessels should keep well clear of these rigs and support vessels.

香港海圖索引 HONG KONG CHART INDEX



水文短訊
Hydrographic Note

航海人員如發現新的危險礙航物，或輔航設備有所改變或損壞，請通知海道測量部。
Mariners are requested to inform Hydrographic Office, Hong Kong discovery of new dangers to navigation, or changes or defects of aids to navigation.

日期 _____ 檔號 _____
Date _____ Ref _____

船名 _____ 目擊者/舉報者姓名 _____
Name of Vessel _____ Name of Observer/Reporter _____

通訊地址 _____
Correspondence _____
Address _____

電郵地址 _____
E-mail Address _____

事項 _____
Subject _____

概位 _____ 緯度 _____ 經度 _____
Approx Position _____ Lat _____ Long _____

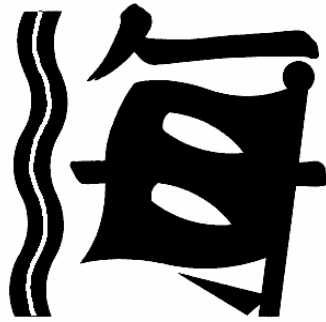
地理位置(如適用) _____
Geographic Position _____
(if applicable) _____

詳細內容 _____
Details _____

所持最新航海通告 _____
Latest Notices to Mariners Held _____

有關刊物(期數、最近的補編日期) _____
Publication(s) Affected (edition number _____
and date of latest supplement) _____

目擊者/舉報者簽署 _____
Signature of Observer/Reporter _____



中國 香港

航海通告

2007年10月18日

目錄

- I 一般事項/有關海圖索引
- II 有關刊物與海圖改正
- III 海事訊息
- IV 航行警告重印(航行警告電傳)

海道測量師
海事處
海道測量部
香港九龍
昂船洲政府船塢
海測樓二樓

電話：(852) 2504 0723
傳真：(852) 2504 4527
電郵：hydro@mardep.gov.hk
網址：www.hydro.gov.hk

第 I 節 一般事項

- 1 航海通告在每隔兩周的星期五發佈。臨時通告摘要及海圖改正記錄（每6個月發佈一次）在航海通告第13及26期刊載。
- 2 在香港海圖上的位置乃參照 1984 年世界大地測量系統（WGS 84）基準。
- 3 深度量度自海圖基準，並以米為單位。此基準與最低天文潮相若。
- 4 高度、高程點皆自高潮標以上計算，以米為單位。
- 5 輔航標記是根據國際航標協會海上浮標系統（A區域） - 紅在左舷，綠在右舷。
- 6 差分全球定位系統校正訊號由海道測量部以 289.0 千赫不停廣播，此訊號適用於以 WGS 84 為基準的位置，凡裝有標準接收器的船舶，均可接收。關於此系統的技術規格，請參閱以下網頁：

www.hydro.gov.hk/service/dgps.htm

- 7 香港海圖在海事處有售：

海事處繳費處

香港中環
統一碼頭道38號
海港政府大樓309室
電話：(852) 2852 3087
傳真：(852) 2542 4287

有關香港海圖的海外訂購及郵寄服務，請向海道測量部查詢：

海道測量部

香港九龍
昂船洲政府船塢
海測樓二樓
電話：(852) 2504 0723
傳真：(852) 2504 4527
電郵：hydro@mardep.gov.hk

- 8 航海通告可在以下網頁下載：

www.hydro.gov.hk/product/ntm.htm

第 II 節 有關刊物與海圖改正

海圖改正

26/2007

龍鼓水道 - 水深

出處 -

香港海道測量部 [W/F No. 21 in MDPAS/HO 6-20-2 (2)]

海圖 HK1503

上次小改正 - 23/2007

加繪水深 15₅

(a) 22° 20.815' N 113° 56.692' E

水深 16₄

(b) 22° 20.908' N 113° 56.272' E

水深 15₄

(c) 22° 20.997' N 113° 55.985' E

15 米等深線連接:

(d) 22° 20.731' N 113° 56.835' E
(現有等深線)(e) 22° 20.717' N 113° 56.928' E
(現有等深線)**刪去**水深 14₁ 及相關之 15 米等深線

靠近上述(a)點北方

水深 14₅ 及相關之 15 米等深線

22° 20.857' N 113° 56.534' E

水深 14₉ 及相關之 15 米等深線

靠近上述(b)點西北方

水深 15 及相關之 15 米等深線

靠近上述(c)點西北偏北方

原有 15 米等深線連接:

上述(d) - (e)點

27/2007 龍鼓水道 - 屯門 - 限制區及水深

出處 - 香港海道測量部 [W/F No. 21 in MDPAS/HO 6-20-2 (2)]

海圖 HK1503 上次小改正 - 26/2007

加繪 隨附貼圖，中心點為： 22° 22.239' N 113° 58.053' E
顯示屯門客運碼頭限制區及已改變的水深

28/2007 海港西部 - 青衣西 - 浮塢及水深

出處 - 香港海道測量部 [W/F No. 21 in MDPAS/HO 6-20-2 (2)]

海圖 HK0803 上次小改正 - 16/2007

加繪 隨附貼圖，中心點為： 22° 20.041' N 114° 05.319' E
顯示重置的“友聯 3 號浮塢”及已改變的水深

**第 III 節
海事訊息**

A 臨時通告(T)

無

B 已撤銷的臨時通告(T)

22(T)/2007 葵涌一號貨櫃碼頭 - 疏浚工程

第 IV 節

航行警告重印(航行警告電傳)

在 2007 年 10 月 12 日仍然有效的航行警告如下:

LA13/2007

南海 10°00' N 以北的鑽井平台及支援船位置一覽表:

鑽井平台	惠州 19-2 平台	21° 21.97' N	115° 04.98' E
鑽井平台	惠州 19-3 平台	21° 21.16' N	115° 01.02' E
鑽井平台	惠州 21-1 平台	21° 20.95' N	115° 25.37' E
鑽井平台	惠州 21-1B 平台	21° 20.92' N	115° 25.34' E
鑽井平台	惠州 26-1 平台	21° 10.55' N	115° 15.88' E
鑽井平台	惠州 32-2 平台	21° 09.68' N	115° 10.19' E
鑽井平台	惠州 32-3 平台	21° 09.87' N	115° 13.09' E
鑽井平台	陸丰 13-1 平台	21° 35.27' N	116° 09.42' E
鑽井平台	陸丰 13-2 平台	21° 37.85' N	116° 03.21' E
鑽井平台	番禺 4-2 平台	20° 50.84' N	114° 37.09' E
鑽井平台	番禺 5-1 平台	20° 51.34' N	114° 47.93' E
鑽井平台	西江 23-1 平台	21° 21.05' N	114° 42.99' E
鑽井平台	西江 24-3 平台	21° 22.75' N	114° 54.69' E
鑽井平台	西江 30-2 平台	21° 16.30' N	114° 58.53' E
鑽井平台	潤洲 6-1	20° 54.63' N	108° 51.88' E
鑽井平台	潤洲 11-1 平台	20° 47.78' N	108° 43.47' E
鑽井平台	潤洲 11-4 A	20° 40.84' N	108° 40.90' E
鑽井平台	潤洲 11-4 B	20° 40.39' N	108° 40.09' E
鑽井平台	潤洲 11-4 C	20° 41.04' N	108° 42.45' E
鑽井平台	潤洲 12-1 A	20° 48.98' N	108° 53.91' E
鑽井平台	潤洲 12-1 B	20° 50.20' N	108° 54.01' E
鑽井平台	文昌 13-1	19° 37.77' N	112° 04.01' E
鑽井平台	文昌 13-2	19° 34.92' N	112° 01.17' E
鑽井平台	東方 1-1 A	18° 34.53' N	107° 43.64' E
鑽井平台	東方 1-1 B	18° 36.09' N	107° 40.48' E
鑽井平台	東方 1-1 D	18° 36.87' N	108° 40.90' E
鑽井平台	東方 1-1 E	18° 37.26' N	107° 45.55' E
鑽井平台	崖城 13-1	17° 30.54' N	109° 01.48' E
鑽井平台	南山終端	18° 18.43' N	109° 08.87' E
鑽井平台	勘探 3 號	20° 44.18' N	114° 34.48' E
鑽井平台及油船	南海挑戰 (流花 11-1)	20° 49.54' N	115° 42.01' E
鑽井平台及油船	自強號 / 潤洲 11-4 D	20° 48.80' N	108° 37.47' E
貯油船	海洋 111 號終端	20° 51.09' N	114° 42.51' E
貯油船	南海發現號終端	21° 21.65' N	115° 24.64' E
貯油船	南海開拓號終端	21° 18.41' N	114° 56.30' E
貯油船	南海盛開號終端	21° 36.05' N	116° 08.90' E
貯油船	南海勝利號終端	20° 50.87' N	115° 42.00' E
貯油船	睦寧號油輪	21° 28.70' N	116° 38.49' E
貯油船	南海奮進號	19° 36.69' N	112° 02.77' E
貯油船	潤洲終端	21° 02.53' N	109° 05.09' E

所有船舶務請遠離這些鑽井平台及支援船。

附隨香港航海通告編號 27/2007

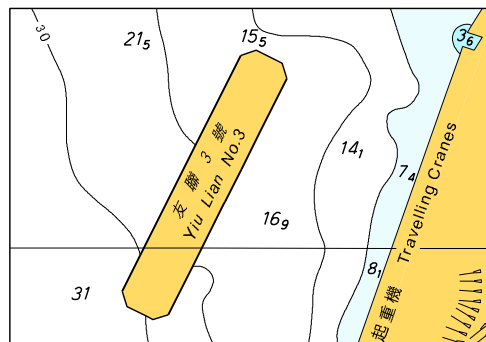
To accompany HK Notice to Mariners No. 27/2007



此貼圖適用於海圖編號 HK1503

Block for Chart No. HK1503

附隨香港航海通告編號 28/2007
To accompany HK Notice to Mariners No.28/2007



此貼圖適用於海圖編號HK0803
Block for Chart No. HK0803