

19/2004

Ma Wan and Approaches – Tsing Yi North – Depths, Contour

Source –

HK Hydrographic Office [L/M 8 in PA/S/HO 108/1/7 (8)]

Chart HK1502

(Last Small Correction) – (16/2004)

Insert

the accompanying block, showing
amendments to depths and contours
centred on

22° 21.834' N 114° 04.956' E

19/2004

馬灣及臨近水域 - 青衣北 - 水深，等深線

出處 -

香港海道測量部

[L/M 8 in PA/S/HO 108/1/7 (8)]

海圖 HK1502

(上次小改正) - (16/2004)

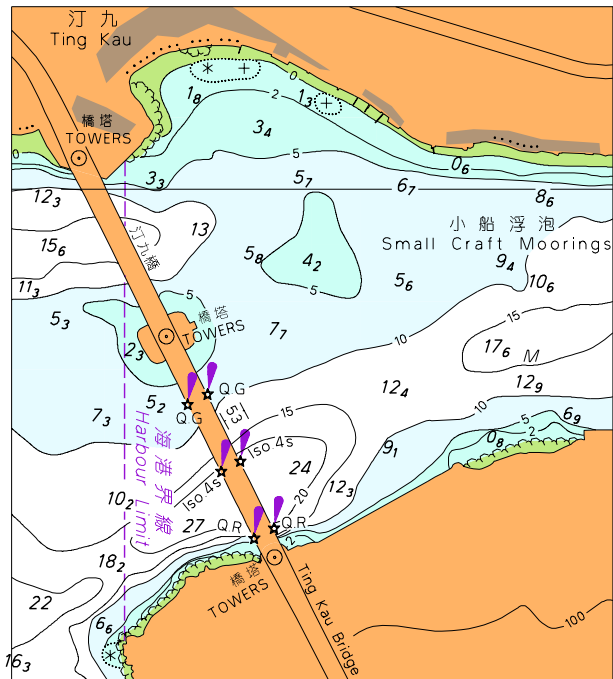
加繪

隨附貼圖，以表示水深及等深
線之更改，中心點為

22° 21.834' N 114° 04.956' E

附隨香港航海通告編號 19/2004

To accompany HK Notice to Mariners No. 19/2004



此貼圖適用於海圖編號 HK1502

Block for Chart No HK1502