

32/2005

Harbour – Central Part – Tsim Sha Tsui – Depths

Source – HK Hydrographic Office [L/M 18 in PA/S/HO 108/1/7 (9)]

Chart HK0802 (Last Small Correction – 28/2005)

Insert the accompanying block, showing change of 22° 17.650' N 114° 10.000' E
depths, centred on:

32/2005

海港中部 - 尖沙咀 - 水深

出處 -

香港海道測量部 [L/M 18 in PA/S/HO 108/1/7 (9)]

海圖 HK0802

(上次小改正 - 28/2005)

加繪

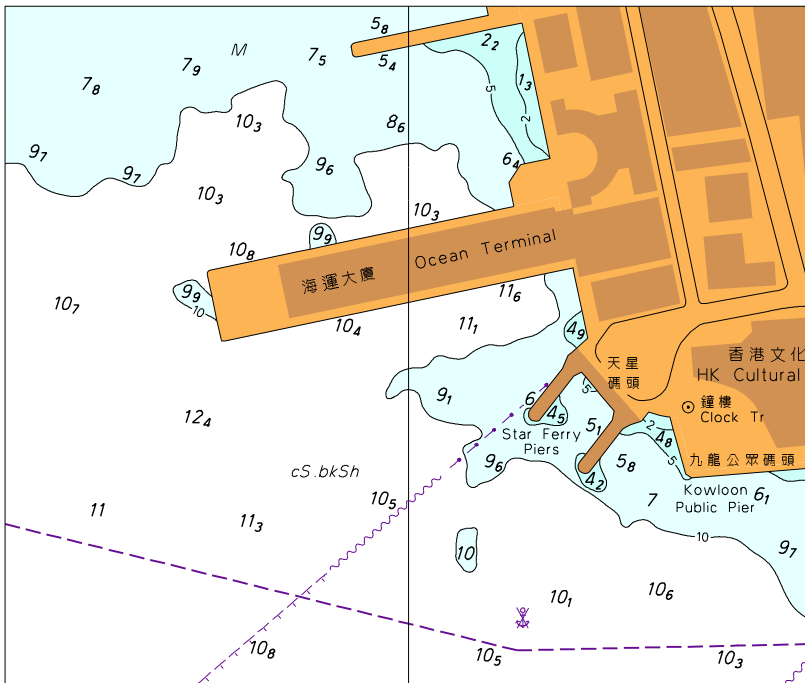
隨附貼圖，中心點為：

22° 17.650' N 114° 10.000' E

顯示已改變的水深

附隨香港航海通告編號 32/2005

To accompany HK Notice to Mariners No. 32/2005



此貼圖適用於海圖編號 HK0802

Block for Chart No. HK0802