


33/2006

South Eastern Approaches – Lamma Island – Submarine Cable. Depths.

Source – HK Hydrographic Office [W/F No. 24 in MDPAS/HO 6-20-2(1)]

Chart HK2502 (Last Small Correction – 32/2006)

Insert	 <i>Obstn</i>	22° 13.259' N	114° 07.706' E
	+ <i>(11₁)</i>	22° 10.723' N	114° 07.306' E
	the accompanying block, showing change of submarine cable areas, centred on:	22° 15.000' N	114° 07.318' E

33/2006

東南臨近水域 - 南丫島 - 海底電纜範圍，水深

出處 -

香港海道測量部 [W/F No. 24 in MDPAS/HO 6-20-2 (1)]

海圖 HK2502

上次小改正 - 32/2005

加繪

④ *Obstn*

22° 13.259' N 114° 07.706' E

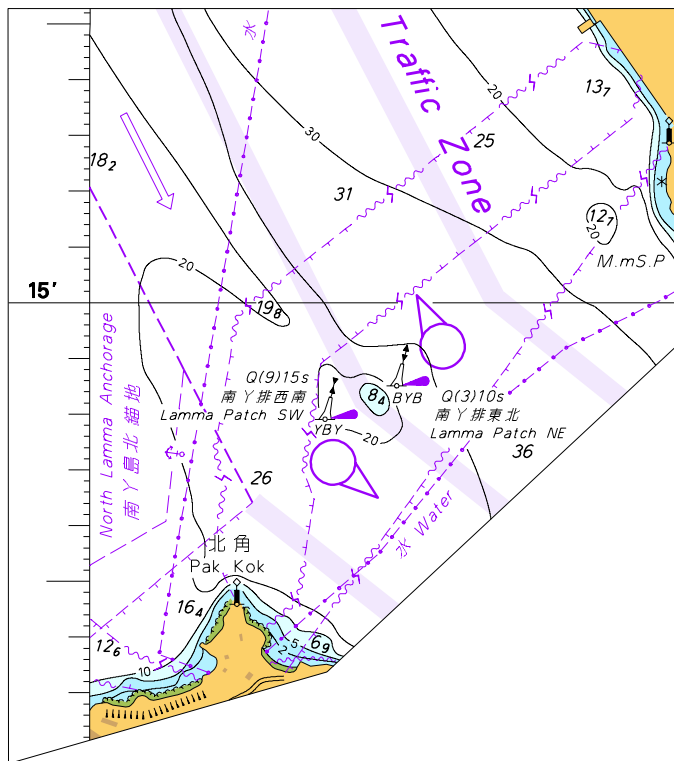
+ (*11₁*)

22° 10.723' N 114° 07.306' E

隨附貼圖，中心點為：

22° 15.000' N 114° 07.318' E

顯示已改變的海底電纜範圍



此貼圖適用於海圖編號HK2502

Block for Chart No. HK2502