

10/2008 Deep Bay – Northern Fairway – Anchorage limits, buoys, legend.

Source – China MSA Notices No. 1131/2007, 18/2008, 19/2008 & 65/2008

Chart HK1504 (Last Small Correction – 1/2008)

Insert the accompanying block, showing change of anchorage limits, buoys and legend, centre on: 22° 27.387' N 113° 52.343' E



Fl(2)R.6s (1)

22° 26.563' N 113° 52.087' E



Fl(2)G.6s (2)

22° 26.308' N 113° 52.575' E

Move




Fl(2)R.6s No.2

From: 22° 26.681' N 113° 53.212' E

To: 22° 26.720' N 113° 53.162' E

Delete

limit of anchorage area, , joining:

22° 26.389' N 113° 52.659' E

22° 26.389' N 113° 51.960' E

10/2008


后海灣 - 北航道 - 錨地界線，浮標，註記

出處 - 中國海事局改正通告第 1131/2007，18/2008，19/2008 及 65/2008 號

海圖 HK1504 (上次小改正 - 1/2008)

加繪 隨附貼圖，中心點為：
顯示已改變的錨地界線，浮標及註記

22° 27.387' N 113° 52.343' E

 *F1(2)R.6s (1)*

22° 26.563' N 113° 52.087' E


 *F1(2)G.6s (2)*

22° 26.308' N 113° 52.575' E

移動  *F1(2)R.6s No.2*

原位置：22° 26.681' N 113° 53.212' E

新位置：22° 26.720' N 113° 53.162' E

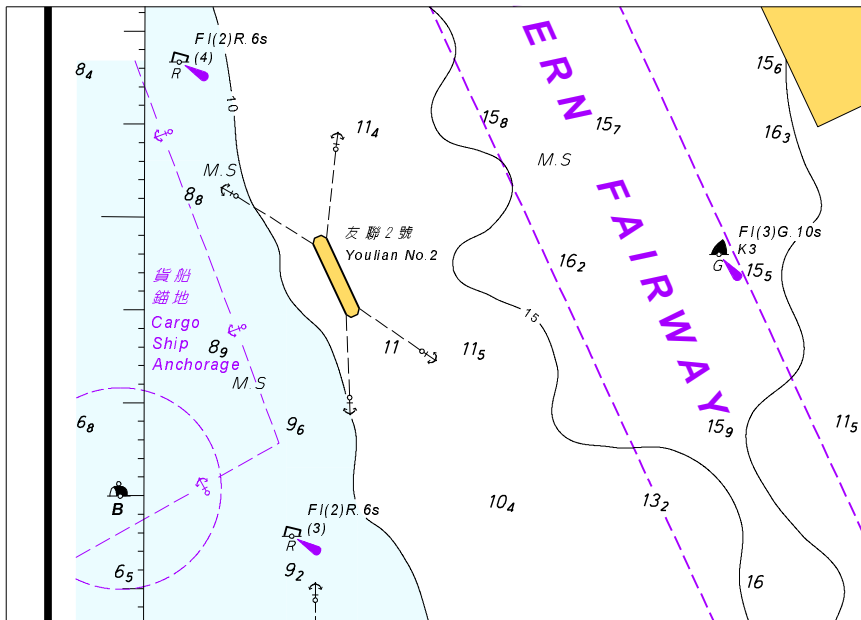
刪去 錨地界線，，連接：

22° 26.389' N 113° 52.659' E

22° 26.389' N 113° 51.960' E

附隨香港航海通告編號 10 / 2008

To accompany HK Notice to Mariners No. 10/2008



此貼圖適用於海圖編號 HK1504

Block for Chart No. HK1504