

10(T)/2009

## Urmston Road – Sha Chau – Approach Channel. Buoyage. Submarine pipeline laying

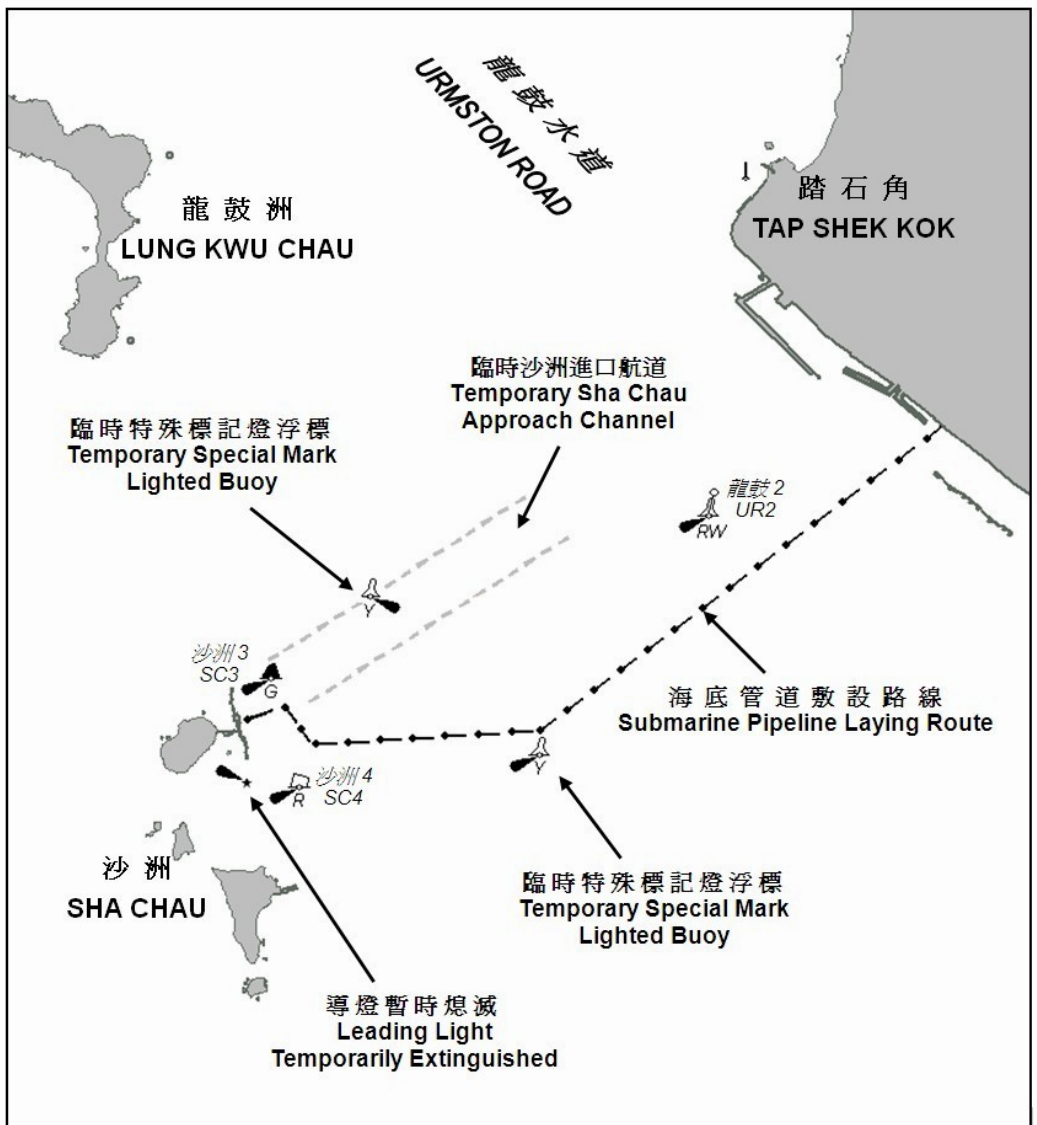
Source:

Hong Kong Marine Department Notices No. 41 and 49 of 2009 refer.

1. The attached plan shows the temporary relocation of the Sha Chau Approach Channel and the establishment of two special mark lighted buoys in connection with the submarine pipeline laying works.
2. The following lighted buoys have been temporarily withdrawn :

Designation	Position
SC1	22° 21.169' N 113° 54.132' E
SC2	22° 21.114' N 113° 54.302' E

Chart Affected: HK1503



## 龍鼓水道 - 沙洲 - 航道, 浮標, 敷設海底管道

參考香港海事處佈告 2009 年第 41 及 49 號。

1. 附圖標示進行中的海底管道敷設工程, 並設置與工程相關的臨時沙洲航道及特殊標記設燈浮標。
2. 臨時移走的設燈浮標:

名稱	位置
沙洲 1	22° 21.169' N 113° 54.132' E
沙洲 2	22° 21.114' N 113° 54.302' E

有關海圖: HK1503

