

32/2009

Urmston Road – Tuen Mun Typhoon Shelter – Depths.

Source – HK Hydrographic Office [W/F No. 23 in MDPAS/HO 6-20-2(4)]

Chart HK1502 (Last Small Correction – 26/2009)

Insert the accompanying block, showing change of depths, centred on: 22° 22.530' N 113° 58.381' E

Chart HK1503 (Last Small Correction – 26/2009)

Insert the accompanying block, showing change of depths, centred on: 22° 22.450' N 113° 58.595' E

32/2009

龍鼓水道 - 屯門避風塘 - 水深

出處 - 香港海道測量部 [W/F No. 23 in MDPAS/HO 6-20-2 (4)]

海圖 HK1502 (上次小改正 - 26/2009)

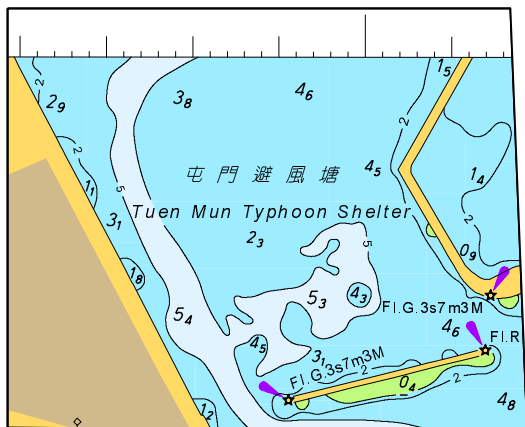
加貼 隨附貼圖，中心點為：
顯示已改變的水深 $22^{\circ} 22.530' N$ $113^{\circ} 58.381' E$

海圖 HK1503 (上次小改正 - 26/2009)

加貼 隨附貼圖，中心點為：
顯示已改變的水深 $22^{\circ} 22.450' N$ $113^{\circ} 58.595' E$

附隨香港航海通告編號 32/2009

To accompany HK Notice to Mariners No. 32/2009

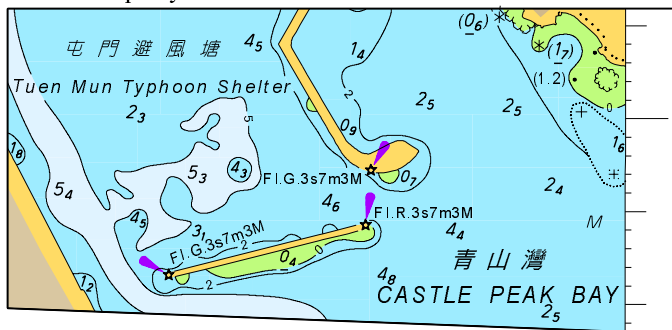


此貼圖適用於海圖編號 HK1502

Block for chart No. HK1502

附隨香港航海通告編號 32/2009

To accompany HK Notice to Mariners No. 32/2009



此貼圖適用於海圖編號 HK1503

Block for Chart No. HK1503