

10/2010

Mirs Bay – Lighted buoys.

Source –

China MSA Notices No. 166,186,188/2010

Chart HK3001

(Last Small Correction – 9/2010)

Insert

the accompanying block, showing change of lighted buoys, centred on:

22° 35.388' N 114° 23.197' E

Chart HK7501

(Last Small Correction – 7/2010)

Insert



22° 33.930' N 114° 23.790' E

10/2010

大鵬灣 - 設燈浮標

出處 -

中國海事局改正通告第 166, 186, 188/2010 號

海圖 HK3001

(上次小改正 - 9/2010)

加貼

隨附貼圖，中心點為：
顯示已改變的設燈浮標

22° 35.388' N 114° 23.197' E

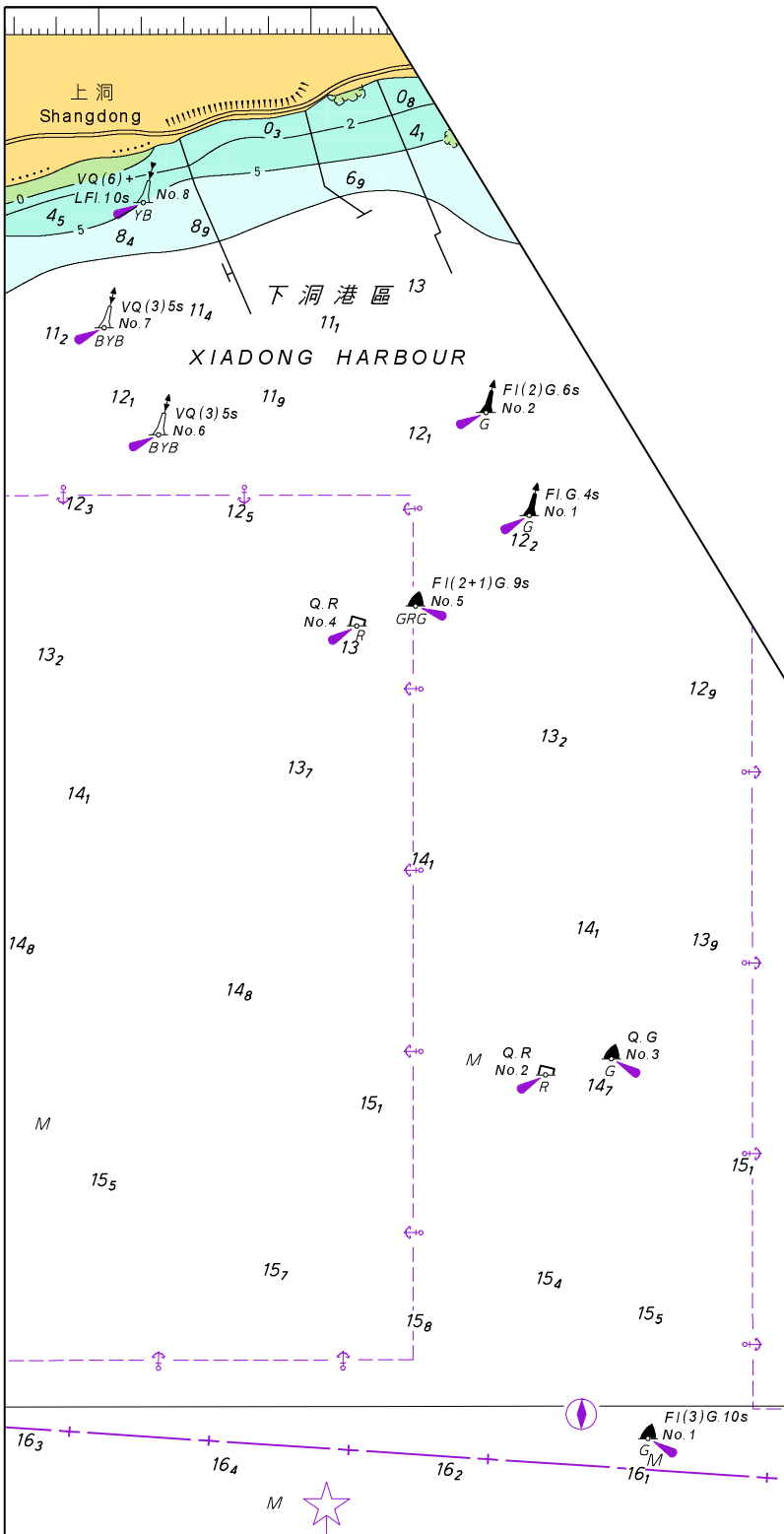
海圖 HK7501

(上次小改正 - 7/2010)

加繪



22° 33.930' N 114° 23.790' E



此貼圖適用於海圖編號 HK3001

Block for Chart No. HK3001