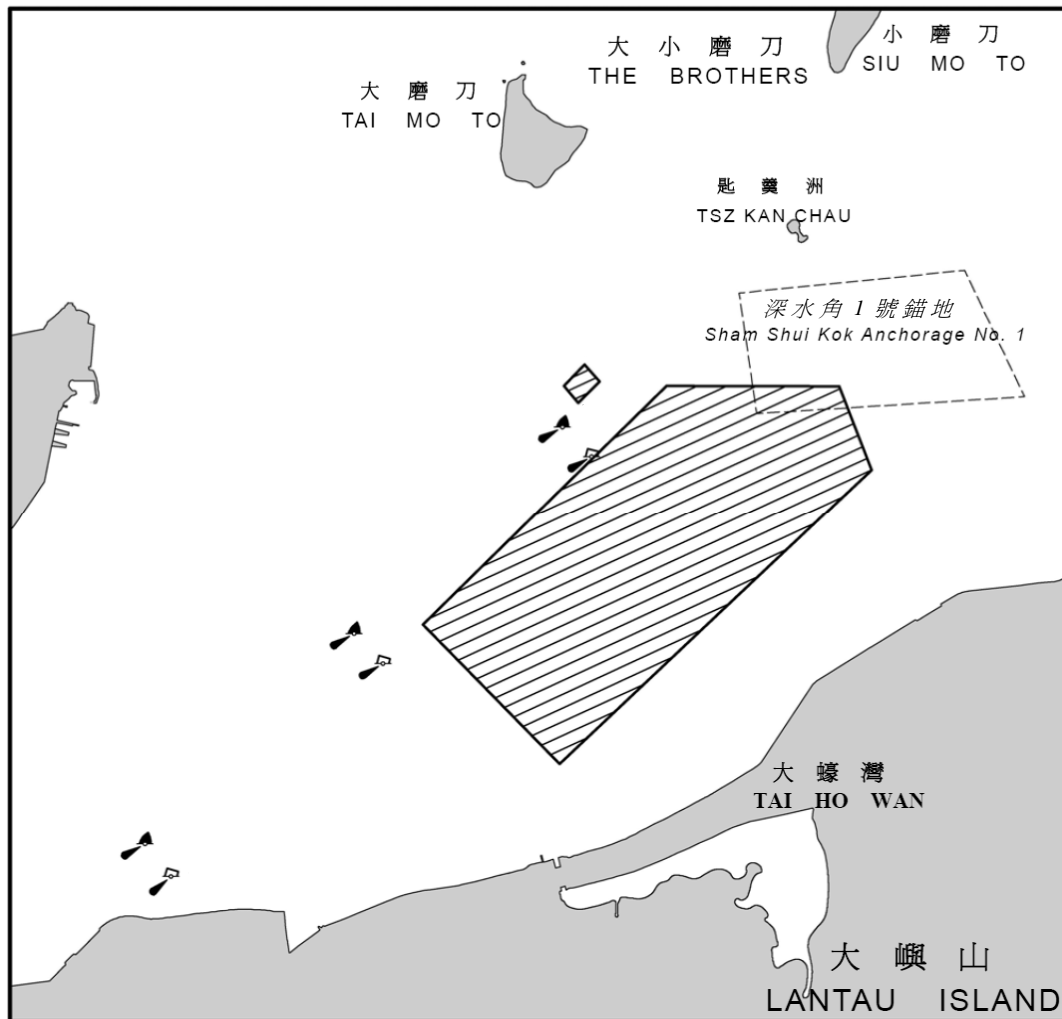


27(T)/2010

# Lantau Island – Tai Ho Wan – Marine Site Investigation.

Source: Hong Kong Marine Department Notice No. 87 of 2010 refers.  
Marine site investigation works are being carried out in the hatched areas.  
Chart Affected: HK1502, HK1503



27(T)/2010

# 大嶼山 - 大蠔灣 - 海上地盤勘測工程

出處 - 參考香港海事處佈告 2010 年第 87 號。  
附圖陰影線標示施工範圍。

有關海圖: HK1502, HK1503

