

## NOTICES TO MARINERS

**9 September 2005**

---

### CONTENTS

- I General Notes / Index of Charts Affected
- II Publications Affected and Chart Corrections
- III Marine Information
- IV Reprints of Navigational Warnings (NAVTEX)

---

The Hydrographer  
Hydrographic Office  
Marine Department  
2/F Hydro Building  
Government Dockyard  
Stonecutters Island, Kowloon  
HONG KONG

Tel : (852) 2504 0723  
Fax : (852) 2504 4527  
E-mail : [hydro@mardep.gov.hk](mailto:hydro@mardep.gov.hk)  
Website : [www.hydro.gov.hk](http://www.hydro.gov.hk)

**SECTION I**  
**GENERAL NOTES**

- 1 Notices to Mariners are issued fortnightly on a Friday. A summary of temporary notices and a chart correction record (issued every six months) are published in Issue No 13 and 26 of Notices to Mariners.
- 2 Positions on Hong Kong Charts are referred to the World Geodetic System 1984 (WGS 84) Datum.
- 3 Depths are measured in metres and are reduced to Chart Datum, which is approximately the Lowest Astronomical Tide (LAT).
- 4 Heights and spot heights are measured in metres above the High Water Mark (HWM).
- 5 Navigational marks are based on the IALA Maritime Buoyage System (Region A) – ie Red to Port, Green to Starboard.
- 6 Continuous Differential Global Positioning System (DGPS) correction signals for WGS 84 positions are broadcast by the Hydrographic Office on 289.0 kHz and can be received by any vessel with a standard DGPS receiver. For technical details of the system, please refer to the following webpage:

**[www.hydro.gov.hk/service/dgps.htm](http://www.hydro.gov.hk/service/dgps.htm)**

- 7 Hong Kong charts are available for sale at the Marine Department:

**Shroff Office, Marine Department**

Room 309, Harbour Building

38 Pier Road, Central

HONG KONG

Tel : (852) 2852 3087

Fax : (852) 2542 4287

For overseas orders and mail services, please contact the Hydrographic Office:

**Hydrographic Office**

2/F Hydro Building

Government Dockyard

Stonecutters Island, Kowloon

HONG KONG

Tel : (852) 2504 0723

Fax : (852) 2504 4527

E-mail : [hydro@mardep.gov.hk](mailto:hydro@mardep.gov.hk)

- 8 Copies of the Notices To Mariners can be downloaded from the following webpage:

**[www.hydro.gov.hk/product/ntm.htm](http://www.hydro.gov.hk/product/ntm.htm)**



**SECTION II**  
**PUBLICATION AFFECTED AND CHART CORRECTIONS**

**Chart Correction****32/2005 Harbour – Central Part – Tsim Sha Tsui – Depths**

Source – HK Hydrographic Office [L/M 18 in PA/S/HO 108/1/7 (9)]

**Chart HK0802** (Last Small Correction – 28/2005)Insert the accompanying block, showing change of 22° 17.650' N 114° 10.000' E  
depths, centred on:

---

**33/2005 Ma Wan and Approaches – Sham Shui Kok – Mooring Buoy**

Source – HK Hydrographic Office [L/M 18 in PA/S/HO 108/1/7 (9)]

**Chart HK1502** (Last Small Correction – 28/2005)Insert  22° 19.088' N 113° 59.425' E

**SECTION III**  
**MARINE INFORMATION**

**A Temporary Notice (T)**

Nil

---

**B Cancelled Temporary Notice (T)**

Nil

---

**SECTION IV**  
**REPRINTS OF NAVIGATIONAL WARNINGS (NAVTEX)**

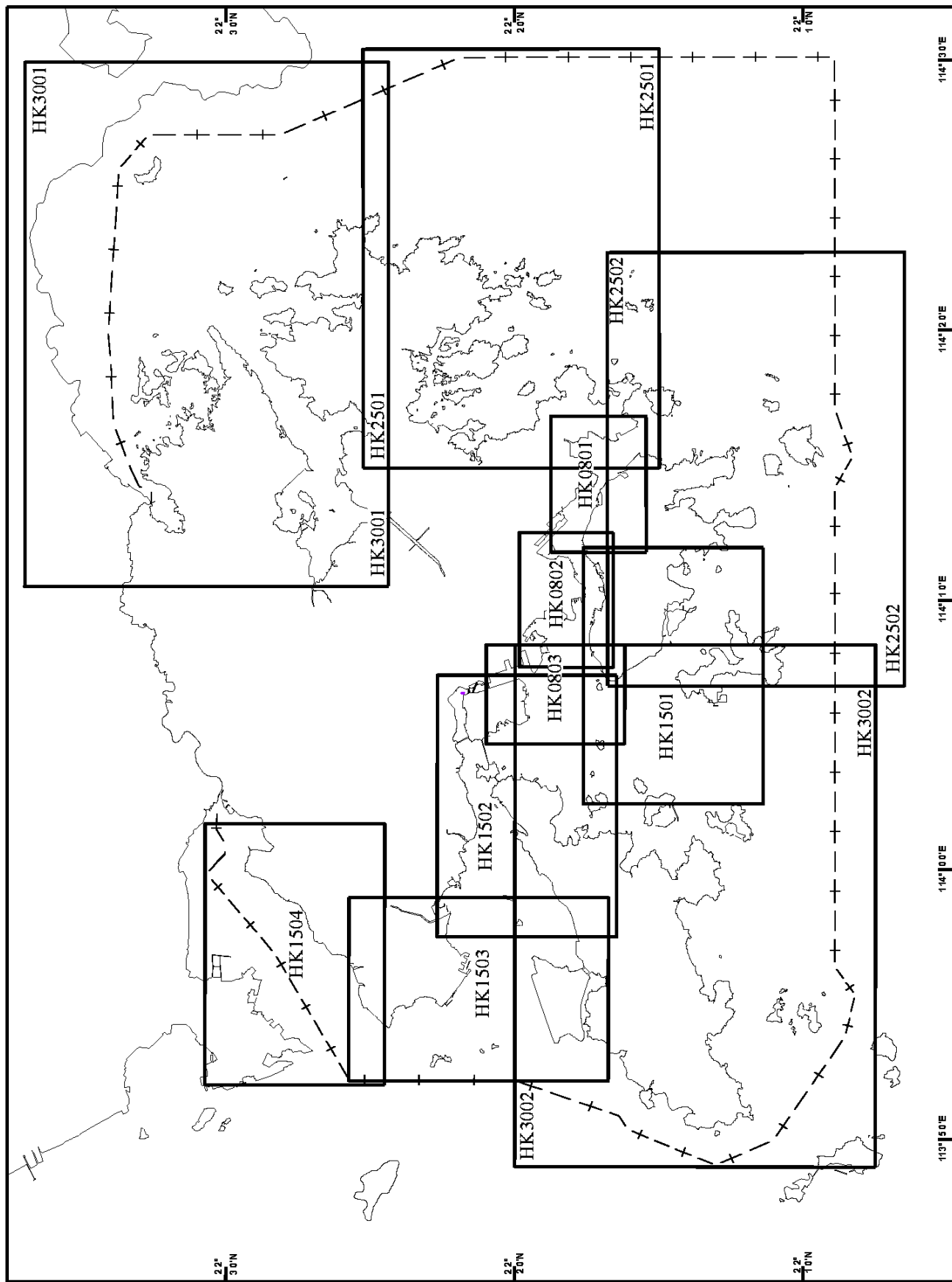
The following navigational warning is still in force on 2 September 2005:

LA03/2005            Positions of rigs and support vessels north of 10° 00' N in the South China Sea:

Rig	HUI ZHOU 19-2	21° 21.97' N	115° 04.98' E
Rig	HUI ZHOU 19-3	21° 21.16' N	115° 01.02' E
Rig	HUI ZHOU 21-1	21° 20.95' N	115° 25.37' E
Rig	HUI ZHOU 26-1	21° 10.55' N	115° 15.88' E
Rig	HUI ZHOU 32-2	21° 09.68' N	115° 10.18' E
Rig	HUI ZHOU 32-3	21° 09.88' N	115° 13.08' E
Rig	LU FENG 13-1	21° 35.27' N	116° 09.42' E
Rig	NAN HAI TIAO ZHAN	20° 50.58' N	115° 41.00' E
Rig	NAN HAI 4	20° 50.20' N	108° 54.00' E
Rig	KAN TAN 3	19° 45.42' N	112° 37.14' E
Rig	PAN YU 4-2	20° 50.84' N	114° 37.09' E
Rig	PAN YU 5-1	20° 51.34' N	114° 47.93' E
Rig	XI JIANG 24-3	21° 22.75' N	114° 54.70' E
Rig	XI JIANG 30-2	21° 16.30' N	114° 58.53' E
Rig	WEN CHANG 13-1	19° 36.67' N	112° 02.66' E
Rig	WEN CHANG 13-2	19° 36.67' N	112° 02.66' E
Storage tanker	FEN JIN	19° 36.67' N	112° 02.66' E
Storage tanker	HAI YANG 111	20° 51.09' N	114° 42.51' E
Storage tanker	NAN HAI FA XIAN	21° 21.67' N	115° 24.63' E
Storage tanker	NAN HAI KAI TUO	21° 18.42' N	114° 56.30' E
Storage tanker	NAN HAI SHENG KAI	21° 36.05' N	116° 08.90' E
Storage tanker	NAN HAI SHENG LI	20° 49.40' N	115° 42.01' E
Storage tanker	NAVION MUNIN	21° 28.70' N	116° 38.49' E

All vessels should keep well clear of these rigs and support vessels.

# 香港海圖索引 HONG KONG CHART INDEX



**水文短訊**  
**Hydrographic Note**

航海人員如發現新的危險礙航物，或輔航設備有所改變或損壞，請通知海道測量部。  
Mariners are requested to inform Hydrographic Office, Hong Kong discovery of new dangers to navigation, or changes or defects of aids to navigation.

日期 \_\_\_\_\_ 檔號 \_\_\_\_\_  
Date \_\_\_\_\_ Ref \_\_\_\_\_

船名 \_\_\_\_\_ 目擊者/舉報者姓名 \_\_\_\_\_  
Name of Vessel \_\_\_\_\_ Name of Observer/Reporter \_\_\_\_\_

通訊地址 \_\_\_\_\_  
Correspondence \_\_\_\_\_  
Address \_\_\_\_\_

電郵地址 \_\_\_\_\_  
E-mail Address \_\_\_\_\_

事項 \_\_\_\_\_  
Subject \_\_\_\_\_

概位 \_\_\_\_\_ 緯度 \_\_\_\_\_ 經度 \_\_\_\_\_  
Approx Position \_\_\_\_\_ Lat \_\_\_\_\_ Long \_\_\_\_\_

地理位置(如適用) \_\_\_\_\_  
Geographic Position \_\_\_\_\_  
(if applicable) \_\_\_\_\_

詳細內容 \_\_\_\_\_  
Details \_\_\_\_\_

所持最新航海通告 \_\_\_\_\_  
Latest Notices to Mariners Held \_\_\_\_\_

有關刊物(期數、最近的補編日期) \_\_\_\_\_  
Publication(s) Affected (edition number \_\_\_\_\_  
and date of latest supplement) \_\_\_\_\_

目擊者/舉報者簽署 \_\_\_\_\_  
Signature of Observer/Reporter \_\_\_\_\_



中國 香港

航海通告

2005年9月9日

---

目錄

- I 一般事項/有關海圖索引
- II 有關刊物與海圖改正
- III 海事訊息
- IV 航行警告重印(航行警告電傳)

---

海道測量師  
海事處  
海道測量部  
香港九龍  
昂船洲政府船塢  
海測樓二樓

電話：(852) 2504 0723  
傳真：(852) 2504 4527  
電郵：[hydro@mardep.gov.hk](mailto:hydro@mardep.gov.hk)  
網址：[www.hydro.gov.hk](http://www.hydro.gov.hk)

## 第 I 節 一般事項

- 1 航海通告在每隔兩周的星期五發佈。臨時通告摘要及海圖改正記錄（每6個月發佈一次）在航海通告第13及26期刊載。
- 2 在香港海圖上的位置乃參照 1984 年世界大地測量系統（WGS 84）基準。
- 3 深度量度自海圖基準，並以米為單位。此基準與最低天文潮相若。
- 4 高度、高程點皆自高潮標以上計算，以米為單位。
- 5 輔航標記是根據國際航標協會海上浮標系統（A區域）－紅在左舷，綠在右舷。
- 6 差分全球定位系統校正訊號由海道測量部以 289.0 千赫不停廣播，此訊號適用於以 WGS 84 為基準的位置，凡裝有標準接收器的船舶，均可接收。關於此系統的技術規格，請參閱以下網頁：

**[www.hydro.gov.hk/service/dgps.htm](http://www.hydro.gov.hk/service/dgps.htm)**

- 7 香港海圖在海事處有售：

### **海事處繳費處**

香港中環  
統一碼頭道38號  
海港政府大樓309室  
電話：(852) 2852 3087  
傳真：(852) 2542 4287

有關香港海圖的海外訂購及郵寄服務，請向海道測量部查詢：

### **海道測量部**

香港九龍  
昂船洲政府船塢  
海測樓二樓  
電話：(852) 2504 0723  
傳真：(852) 2504 4527  
電郵：[hydro@mardep.gov.hk](mailto:hydro@mardep.gov.hk)

- 8 航海通告可在以下網頁下載：

**[www.hydro.gov.hk/product/ntm.htm](http://www.hydro.gov.hk/product/ntm.htm)**



## 第 II 節 有關刊物與海圖改正

### 海圖改正

32/2005

海港中部 - 尖沙咀 - 水深

出處 -

香港海道測量部 [L/M 18 in PA/S/HO 108/1/7 (9)]

海圖 HK0802

(上次小改正 - 28/2005)

加繪

隨附貼圖，中心點為：  
顯示已改變的水深

22° 17.650' N 114° 10.000' E

---

33/2005

馬灣及臨近水域 - 深水角 - 繫泊浮泡

出處 -

香港海道測量部 [L/M 18 in PA/S/HO 108/1/7 (9)]

海圖 HK1502

(上次小改正 - 28/2005)

加繪



22° 19.088' N 113° 59.425' E

---

第 III 節  
海事訊息

A            臨時通告(T)

無

---

B            已撤銷的臨時通告(T)

無

---

## 第 IV 節

### 航行警告重印(航行警告電傳)

在 2005 年 9 月 2 日 仍然有效的航行警告如下：

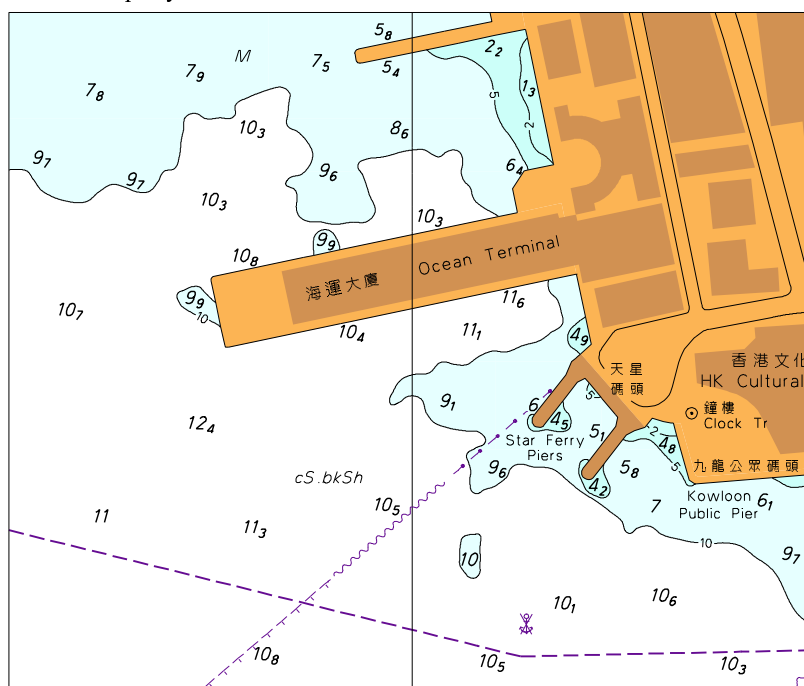
LA03/2005            南海 10° 00' N 以北的鑽井平台及支援船位置一覽表：

鑽井平台	惠州 19-2	21° 21.97' N	115° 04.98' E
鑽井平台	惠州 19-3	21° 21.16' N	115° 01.02' E
鑽井平台	惠州 21-1	21° 20.95' N	115° 25.37' E
鑽井平台	惠州 26-1	21° 10.55' N	115° 15.88' E
鑽井平台	惠州 32-2	21° 09.68' N	115° 10.18' E
鑽井平台	惠州 32-3	21° 09.88' N	115° 13.08' E
鑽井平台	陸丰 13-1	21° 35.27' N	116° 09.42' E
鑽井平台	南海挑戰 (流花 11-1)	20° 50.58' N	115° 41.00' E
鑽井平台	南海四號	20° 50.20' N	108° 54.00' E
鑽井平台	勘探三號	19° 45.42' N	112° 37.14' E
鑽井平台	番禺 4-2	20° 50.84' N	114° 37.09' E
鑽井平台	番禺 5-1	20° 51.34' N	114° 47.93' E
鑽井平台	西江 24-3	21° 22.75' N	114° 54.70' E
鑽井平台	西江 30-2	21° 16.30' N	114° 58.53' E
鑽井平台	文昌 13-1	19° 36.67' N	112° 02.66' E
鑽井平台	文昌 13-2	19° 36.67' N	112° 02.66' E
貯油船	奮進	19° 36.67' N	112° 02.66' E
貯油船	海洋 111	20° 51.09' N	114° 42.51' E
貯油船	南海發現	21° 21.67' N	115° 24.63' E
貯油船	南海開拓	21° 18.42' N	114° 56.30' E
貯油船	南海盛開	21° 36.05' N	116° 08.90' E
貯油船	南海勝利	20° 49.40' N	115° 42.01' E
貯油船	睦寧	21° 28.70' N	116° 38.49' E

所有船舶務請遠離這些鑽井平台及支援船。

附隨香港航海通告編號 32/2005

To accompany HK Notice to Mariners No. 32/2005



此貼圖適用於海圖編號 HK0802

Block for Chart No. HK0802