

## NOTICES TO MARINERS

**24 December 2009**

---

### CONTENTS

- I General Notes / Index of Charts Affected
  - II Publications Affected and Chart Corrections
  - III Marine Information
  - IV Reprints of Navigational Warnings (NAVTEX)
  - V Amendments to Charts for Local Vessels
- 

The Hydrographer  
Hydrographic Office  
Marine Department  
2/F Hydro Building  
Government Dockyard  
Stonecutters Island, Kowloon  
HONG KONG

Tel : (852) 2504 0723  
Fax : (852) 2504 4527  
E-mail : [hydro@mardep.gov.hk](mailto:hydro@mardep.gov.hk)  
Website : [www.hydro.gov.hk](http://www.hydro.gov.hk)

**SECTION I**  
**GENERAL NOTES**

- 1 Notices to Mariners are issued fortnightly on a Friday. A summary of temporary notices and a chart correction record (issued every six months) are published in Issue No 13 and 26 of Notices to Mariners.
- 2 Positions on Hong Kong Charts are referred to the World Geodetic System 1984 (WGS 84) Datum.
- 3 Depths are measured in metres and are reduced to Chart Datum, which is approximately the Lowest Astronomical Tide (LAT).
- 4 Heights and spot heights are measured in metres above the High Water Mark (HWM).
- 5 Navigational marks are based on the IALA Maritime Buoyage System (Region A) – ie Red to Port, Green to Starboard.
- 6 Continuous Differential Global Positioning System (DGPS) correction signals for WGS 84 positions are broadcast by the Hydrographic Office on 289.0 kHz and can be received by any vessel with a standard DGPS receiver. For technical details of the system, please refer to the following webpage:

**[www.hydro.gov.hk/service/dgps.htm](http://www.hydro.gov.hk/service/dgps.htm)**

- 7 Hong Kong charts are available for sale at the Marine Department:

**Shroff Office, Marine Department**

Room 309, Harbour Building

38 Pier Road, Central

HONG KONG

Tel : (852) 2852 3087

Fax : (852) 2542 4287

For overseas orders and mail services, please contact the Hydrographic Office:

**Hydrographic Office**

2/F Hydro Building

Government Dockyard

Stonecutters Island, Kowloon

HONG KONG

Tel : (852) 2504 0723

Fax : (852) 2504 4527

E-mail : [hydro@mardep.gov.hk](mailto:hydro@mardep.gov.hk)

- 8 Copies of the Notices To Mariners can be downloaded from the following webpage:

**[www.hydro.gov.hk/product/ntm.htm](http://www.hydro.gov.hk/product/ntm.htm)**



**SECTION II**  
**PUBLICATION AFFECTED AND CHART CORRECTIONS**

**Chart Correction**

**37/2009**            **Harbour – Western Part – Kwai Chung – Lights, vertical clearance.**

Source –            HK Hydrographic Office [Marine Department Notices No. 66, 165 and 169 of 2009]

**Chart HK0803** (Last Small Correction – 12/2009)

Insert	the accompanying block, showing new lights and amendment to vertical clearance of the Stonecutters Bridge, centre on:	22° 19.566' N	114° 07.084' E
--------	---	---------------	----------------

**Chart HK1502** (Last Small Correction – 32/2009)

Insert	the accompanying block, showing new lights and amendment to vertical clearance of the Stonecutters Bridge, centre on:	22° 19.704' N	114° 06.921' E
--------	---	---------------	----------------

**Chart HK3002** (Last Small Correction – 35/2009)

Amend	vertical clearance to, 68.5	22° 19.476' N	114° 07.089' E
-------	-----------------------------	---------------	----------------

**SECTION III**  
**MARINE INFORMATION**

**A Temporary Notice (T)**

Nil

---

**B Cancelled Temporary Notice (T)**

Nil

---

**C                      Summary of Temporary Notices (T)**

The following notices are still in force:

17(T)/2003	Urmston Road – North of Hong Kong International Airport – Marine works
37(T)/2005	Urmston Road – Marine piling works
9(T)/2009	Urmston Road – Temporary withdrawal and establishment of lighted buoys
11(T)/2009	Harbour – Central Part – Site investigation and reclamation works
14(T)/2009	Ma Wan and Approaches – Temporary establishment of a Current Meter
16(T)/2009	Western Fairway – Temporary establishment of an isolated danger buoy
19(T)/2009	Urmston Road – Marine Site Investigation
22(T)/2009	Urmston Road – Tap Shek Kok – Temporary establishment of an isolated danger buoy
23(T)/2009	Urmston Road – Hong Kong International Airport – Dredging operations
31(T)/2009	Urmston Road – Pillar Point – Submarine Pipeline Repair Works
34(T)/2009	Kwai Chung Basin, Northern Fairway and Western Fairway – Marine Site Investigation
36(T)/2009	South Western Approaches – Hong Kong International Airport – Marine Site Investigation

---

**D Chart Correction Record**

<b>Chart No.</b>	<b>Edition</b>	<b>Notice No.</b>	
HK0801	Dec 2004	2005	- 7
		2006	- 25
		2007	-
		2008	-
		2009	-
HK0802	May 2006	2007	- 6
		2008	- 12, 18, 21, 27, 32
		2009	- 20
HK0803	May 2007	2007	- 16, 28
		2008	- 2, 16, 25, 32
		2009	- 12, 37
HK1501	July 2006	2006	- 27, 32
		2007	- 13, 20, 29
		2008	- 25, 26
		2009	- 25
HK1502	Sep 2007	2008	- 2, 17, 19, 25, 30, 32
		2009	- 12, 15, 26, 32, 37
HK1503	Dec 2008	2009	- 26, 32, 33, 35
HK1504	Feb 2007	2007	- 17
		2008	- 1, 10, 11, 20, 22, 23, 24, 35
		2009	- 1, 7, 17, 33
HK2501	Aug 2009	2009	-
HK2502	Aug 2008	2008	- 31, 36
		2009	- 8, 28
HK3001	Feb 2007	2007	- 7, 9, 32
		2008	- 13, 15, 37
		2009	- 2, 18, 29, 30
HK3002	Dec 2006	2007	- 12, 15, 20, 21
		2008	- 8, 15, 28
		2009	- 6, 12, 21, 24, 25, 27, 35, 37

---

**SECTION IV**  
**REPRINTS OF NAVIGATIONAL WARNINGS (NAVTEX)**

The following navigational warning is still in force on 18 December 2009:

LA18/2009      Positions of rigs and support vessels north of 10° 00' N in the South China Sea:

Rig

Hui Zhou 19 - 2	21° 21.97' N 115° 04.98' E	W Z 11 - 4 N	20° 45.32' N	108° 45.25' E
H Z 19 - 3	21° 21.16' N 115° 01.02' E	W Z 12 - 1 A	20° 48.98' N	108° 53.91' E
H Z 21 - 1	21° 20.95' N 115° 25.37' E	W Z 12 - 1 B	20° 50.20' N	108° 54.01' E
H Z 21 - 1B	21° 20.92' N 115° 25.34' E	Wen Chang 13 - 1	19° 37.77' N	112° 04.01' E
H Z 26 - 1	21° 10.55' N 115° 15.88' E	Wen Chang 13 - 2	19° 34.92' N	112° 01.17' E
H Z 32 - 2	21° 09.68' N 115° 10.19' E	W C 19 - 1 A	19° 25.92' N	112° 05.43' E
H Z 32 - 3	21° 09.87' N 115° 13.09' E	W C 19 - 1 B	19° 22.98' N	112° 05.45' E
Lu Feng 13 - 1	21° 35.27' N 116° 09.42' E	W C 15 - 1	19° 32.02' N	112° 26.34' E
Lu Feng 13 - 2	21° 37.85' N 116° 03.21' E	W C 14 - 3	19° 37.45' N	112° 16.61' E
Pan Yu 4 - 2	20° 50.84' N 114° 37.09' E	W C 8 - 3	19° 45.75' N	112° 11.24' E
Pan Yu 5 - 1	20° 51.34' N 114° 47.93' E	Dong Fang 1 - 1 A	18° 34.53' N	107° 43.64' E
Xi Jiang 23 - 1	21° 21.05' N 114° 42.99' E	D F 1 - 1 B	18° 36.09' N	107° 40.48' E
X J 24 - 3	21° 22.75' N 114° 54.69' E	D F 1 - 1 D	18° 36.85' N	107° 45.56' E
X J 30 - 2	21° 16.30' N 114° 58.53' E	D F 1 - 1 E	18° 37.26' N	107° 45.55' E
Wai Zhou 6 - 1	20° 54.63' N 108° 51.88' E	Ya Cheng 13 - 1	17° 30.54' N	109° 01.48' E
W Z 11- 1	20° 47.78' N 108° 43.47' E	Nan Shan	18° 18.43' N	109° 08.87' E
W Z 11 - 4 A	20° 40.84' N 108° 40.90' E	Le Dong 22 - 1	17° 33.27' N	108° 35.53' E
W Z 11 - 4 B	20° 40.39' N 108° 40.09' E	L D 15 - 1	17° 36.79' N	108° 24.60' E
W Z 11 - 4 C	20° 41.04' N 108° 42.45' E			

Rig & Tanker

Nan Hai Tiao Zhan	20° 49.54' N 115° 42.01' E	W Z 11- 4DA	20° 48.80' N	108° 37.47' E
W Z 11 - 4 D	20° 48.78' N 108° 37.44' E	W Z 11- 4D - SPM	20° 49.37' N	108° 36.85' E

Storage tanker

Hai Yang 111	20° 51.09' N 114° 42.51' E	XJ 23-1 FPSO	21° 21.21' N	114° 44.14' E
Nan Hai Fa Xian	21° 21.65' N 115° 24.64' E	Nan Hai Fen Jin	19° 36.69' N	112° 02.77' E
Nan Hai Kai Tuo	21° 18.41' N 114° 56.30' E	Wei Zhou	21° 02.53' N	109° 05.09' E
Nan Hai Sheng Kai	21° 36.05' N 116° 08.90' E	Kan Tan No.3	20° 44.18' N	114° 34.48' E
Nan Hai Sheng Li	20° 50.87' N 115° 41.00' E			

All vessels should keep well clear of these rigs and support vessels.

**SECTION V**  
**AMENDMENTS TO CHARTS FOR LOCAL VESSELS (2009 Edition)**

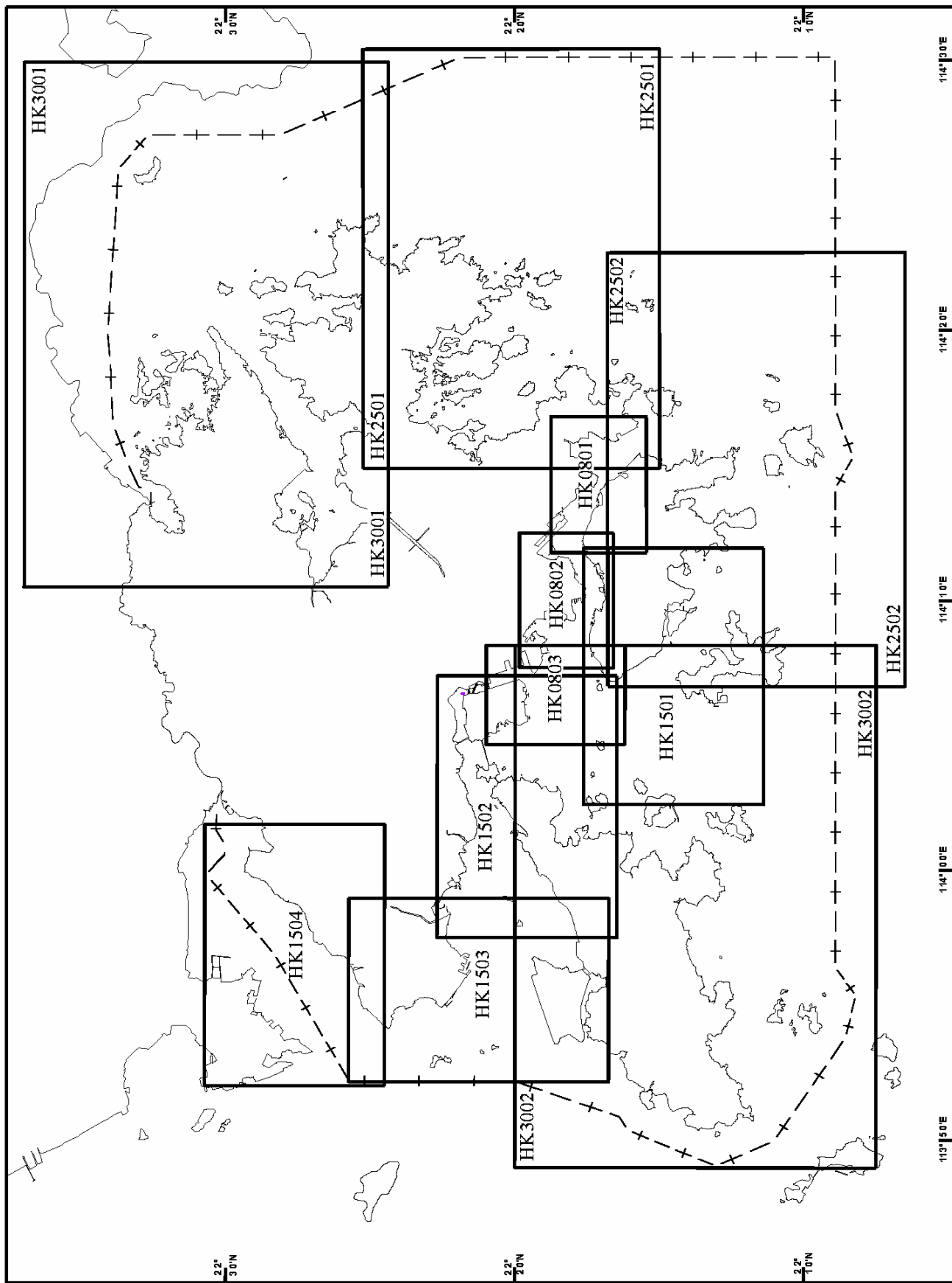
Last Amendment: V-2/2009

Correction No.: Nil

---

**故意留出的空白頁**  
**Page intentionally left blank**

# 香港海圖索引 HONG KONG CHART INDEX



**水文短訊**  
**Hydrographic Note**

航海人員如發現新的危險礙航物，或輔航設備有所改變或損壞，請通知海道測量部。  
Mariners are requested to inform Hydrographic Office, Hong Kong discovery of new dangers to navigation, or changes or defects of aids to navigation.

日期 \_\_\_\_\_ 檔號 \_\_\_\_\_  
Date \_\_\_\_\_ Ref \_\_\_\_\_

船名 \_\_\_\_\_ 目擊者/舉報者姓名 \_\_\_\_\_  
Name of Vessel \_\_\_\_\_ Name of Observer/Reporter \_\_\_\_\_

通訊地址 \_\_\_\_\_  
Correspondence \_\_\_\_\_  
Address \_\_\_\_\_

電郵地址 \_\_\_\_\_  
E-mail Address \_\_\_\_\_

事項 \_\_\_\_\_  
Subject \_\_\_\_\_

概位 \_\_\_\_\_ 緯度 \_\_\_\_\_ 經度 \_\_\_\_\_  
Approx Position \_\_\_\_\_ Lat \_\_\_\_\_ Long \_\_\_\_\_

地理位置(如適用) \_\_\_\_\_  
Geographic Position \_\_\_\_\_  
(if applicable) \_\_\_\_\_

詳細內容 \_\_\_\_\_  
Details \_\_\_\_\_

所持最新航海通告 \_\_\_\_\_  
Latest Notices to Mariners Held \_\_\_\_\_

有關刊物(期數、最近的補編日期) \_\_\_\_\_  
Publication(s) Affected (edition number \_\_\_\_\_  
and date of latest supplement) \_\_\_\_\_

目擊者/舉報者簽署 \_\_\_\_\_  
Signature of Observer/Reporter \_\_\_\_\_



中國 香港

航海通告

2009年12月24日

---

目錄

- I 一般事項/有關海圖索引
- II 有關刊物與海圖改正
- III 海事訊息
- IV 航行警告重印(航行警告電傳)
- V 本地船隻海圖冊修正

---

海道測量師  
海事處  
海道測量部  
香港九龍  
昂船洲政府船塢  
海測樓二樓

電話：(852) 2504 0723  
傳真：(852) 2504 4527  
電郵：hydro@mardep.gov.hk  
網址：www.hydro.gov.hk

## 第 I 節 一般事項

- 1 航海通告在每隔兩周的星期五發佈。臨時通告摘要及海圖改正記錄 (每6個月發佈一次) 在航海通告第13及26期刊載。
- 2 在香港海圖上的位置乃參照 1984 年世界大地測量系統 (WGS 84) 基準。
- 3 深度量度自海圖基準，並以米為單位。此基準與最低天文潮相若。
- 4 高度、高程點皆自高潮標以上計算，以米為單位。
- 5 輔航標記是根據國際航標協會海上浮標系統 (A區域) - 紅在左舷，綠在右舷。
- 6 差分全球定位系統校正訊號由海道測量部以 289.0 千赫不停廣播，此訊號適用於以 WGS 84 為基準的位置，凡裝有標準接收器的船舶，均可接收。關於此系統的技術規格，請參閱以下網頁：

[www.hydro.gov.hk/service/dgps.htm](http://www.hydro.gov.hk/service/dgps.htm)

- 7 香港海圖在海事處有售：

### 海事處繳費處

香港中環

統一碼頭道38號

海港政府大樓309室

電話：(852) 2852 3087

傳真：(852) 2542 4287

有關香港海圖的海外訂購及郵寄服務，請向海道測量部查詢：

### 海道測量部

香港九龍

昂船洲政府船塢

海測樓二樓

電話：(852) 2504 0723

傳真：(852) 2504 4527

電郵：[hydro@mardep.gov.hk](mailto:hydro@mardep.gov.hk)

- 8 航海通告可在以下網頁下載：

[www.hydro.gov.hk/product/ntm.htm](http://www.hydro.gov.hk/product/ntm.htm)



## 第 II 節 有關刊物與海圖改正

### 海圖改正

37/2009	<b>海港西部 - 葵涌 - 燈標, 垂直淨空</b>		
出處 -	香港海道測量部 [海事處報告 2009 年第 66, 165 和 169 號]		
<b>海圖 HK0803</b>	(上次小改正 - 12/2009)		
<b>加貼</b>	隨附貼圖, 中心點為: 顯示昂船洲大橋新置燈標和更改垂直淨空	22° 19.566' N	114° 07.084' E
<b>海圖 HK1502</b>	(上次小改正 - 32/2009)		
<b>加貼</b>	隨附貼圖, 中心點為: 顯示昂船洲大橋新置燈標和更改垂直淨空	22° 19.704' N	114° 06.921' E
<b>海圖 HK3002</b>	(上次小改正 - 35/2009)		
<b>更改</b>	垂直淨空為 68.5	22° 19.476' N	114° 07.089' E

---

第 III 節  
海事訊息

A 臨時通告(T)

無

---

B 已撤銷的臨時通告(T)

無

---

**C 臨時通告(T)摘要**

**以下通告仍然有效：**

17(T)/2003	龍鼓水道 - 香港國際機場北面 - 海事工程
37(T)/2005	龍鼓水道 - 海上打樁工程
9(T)/2009	龍鼓水道 - 暫時移除和設置燈浮標
11(T)/2009	海港中部 - 地盤勘測和填海工程
14(T)/2009	馬灣及臨近水域 - 臨時設置流速儀
16(T)/2009	西航道 - 臨時設置孤立危險浮標
19(T)/2009	龍鼓水道 - 海上地盤勘測工程
22(T)/2009	龍鼓水道 - 踏石角 - 臨時設置孤立危險浮標
23(T)/2009	龍鼓水道 - 香港國際機場 - 疏浚工程
31(T)/2009	龍鼓水道 - 望后石 - 海底管道修理工程
34(T)/2009	葵涌港池, 北航道和西航道 - 海上地盤勘測工程
36(T)/2009	西南臨近水域 - 香港國際機場 - 海上地盤勘測工程

---

---

## D 海圖改正記錄

海圖編號	版本	通告編號
HK0801	2004年12月	2005 - 7
		2006 - 25
		2007 -
		2008 -
		2009 -
HK0802	2006年5月	2007 - 6
		2008 - 12, 18, 21, 27, 32
		2009 - 20
HK0803	2007年5月	2007 - 16, 28
		2008 - 2, 16, 25, 32
		2009 - 12, 37
HK1501	2006年7月	2006 - 27, 32
		2007 - 13, 20, 29
		2008 - 25, 26
		2009 - 25
HK1502	2007年9月	2008 - 2, 17, 19, 25, 30, 32
		2009 - 12, 15, 26, 32, 37
HK1503	2008年12月	2009 - 26, 32, 33, 35
HK1504	2007年2月	2007 - 17
		2008 - 1, 10, 11, 20, 22, 23, 24, 35
		2009 - 1, 7, 17, 33
HK2501	2009年8月	2009 -
HK2502	2008年8月	2008 - 31, 36
		2009 - 8, 28
HK3001	2007年2月	2007 - 7, 9, 32
		2008 - 13, 15, 37
		2009 - 2, 18, 29, 30
HK3002	2006年12月	2007 - 12, 15, 20, 21
		2008 - 8, 15, 28
		2009 - 6, 12, 21, 24, 25, 27, 35, 37

## 第 IV 節

### 航行警告重印(航行警告電傳)

在 2009 年 12 月 18 日仍然有效的航行警告如下:

LA18/2009 南海 10°00' N 以北的鑽井平台及支援船位置一覽表:

#### 鑽井平台

惠州 19-2 平台	21° 21.97' N	115° 04.98' E	潤洲 11-4 N	20° 45.32' N	108° 45.25' E
惠州 19-3 平台	21° 21.16' N	115° 01.02' E	潤洲 12-1 A	20° 48.98' N	108° 53.91' E
惠州 21-1 平台	21° 20.95' N	115° 25.37' E	潤洲 12-1 B	20° 50.20' N	108° 54.01' E
惠州 21-1B 平台	21° 20.92' N	115° 25.34' E	文昌 13-1	19° 37.77' N	112° 04.01' E
惠州 26-1 平台	21° 10.55' N	115° 15.88' E	文昌 13-2	19° 34.92' N	112° 01.17' E
惠州 32-2 平台	21° 09.68' N	115° 10.19' E	文昌 19-1 A	19° 25.92' N	112° 05.43' E
惠州 32-3 平台	21° 09.87' N	115° 13.09' E	文昌 19-1 B	19° 22.98' N	112° 05.45' E
陸豐 13-1 平台	21° 35.27' N	116° 09.42' E	文昌 15-1	19° 32.02' N	112° 26.34' E
陸豐 13-2 平台	21° 37.85' N	116° 03.21' E	文昌 14-3	19° 37.45' N	112° 16.61' E
番禺 4-2 平台	20° 50.84' N	114° 37.09' E	文昌 8-3	19° 45.75' N	112° 11.24' E
番禺 5-1 平台	20° 51.34' N	114° 47.93' E	東方 1-1 A	18° 34.53' N	107° 43.64' E
西江 23-1 平台	21° 21.05' N	114° 42.99' E	東方 1-1 B	18° 36.09' N	107° 40.48' E
西江 24-3 平台	21° 22.75' N	114° 54.69' E	東方 1-1 D	18° 36.85' N	107° 45.56' E
西江 30-2 平台	21° 16.30' N	114° 58.53' E	東方 1-1 E	18° 37.26' N	107° 45.55' E
潤洲 6-1	20° 54.63' N	108° 51.88' E	崖城 13-1	17° 30.54' N	109° 01.48' E
潤洲 11-1 平台	20° 47.78' N	108° 43.47' E	南山終端	18° 18.43' N	109° 08.87' E
潤洲 11-4 A	20° 40.84' N	108° 40.90' E	樂東 22-1	17° 33.27' N	108° 35.53' E
潤洲 11-4 B	20° 40.39' N	108° 40.09' E	樂東 15-1	17° 36.79' N	108° 24.60' E
潤洲 11-4 C	20° 41.04' N	108° 42.45' E			

#### 鑽井平台及油船

南海挑戰(流花 11-1)	20° 49.54' N	115° 42.01' E	潤洲 11-4 DA	20° 48.80' N	108° 37.47' E
自強號/潤洲 11-4 D	20° 48.78' N	108° 37.44' E	潤洲 11-4 D(單點)	20° 49.37' N	108° 36.85' E

#### 貯油船

海洋 111 號終端	20° 51.09' N	114° 42.51' E	西江 23-1 浮式平台	21° 21.21' N	114° 44.14' E
南海發現號終端	21° 21.65' N	115° 24.64' E	南海奮進號	19° 36.69' N	112° 02.77' E
南海開拓號終端	21° 18.41' N	114° 56.30' E	潤洲終端	21° 02.53' N	109° 05.09' E
南海盛開號終端	21° 36.05' N	116° 08.90' E	勘探 3 號	20° 44.18' N	114° 34.48' E
南海勝利號終端	20° 50.87' N	115° 41.00' E			

所有船舶務請遠離這些鑽井平台及支援船。

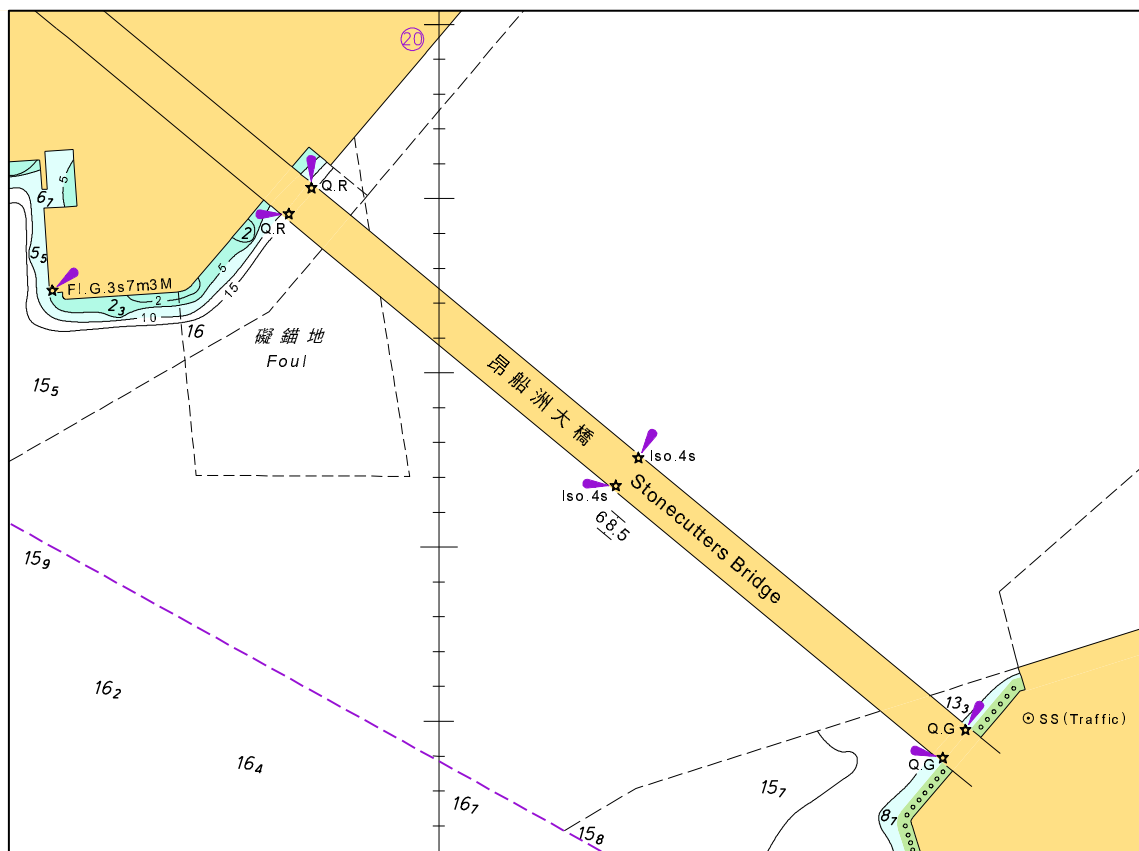
第 V 節  
本地船隻海圖冊修正 (2009 版)

上次修正: V-2/2009

改正編號: 無

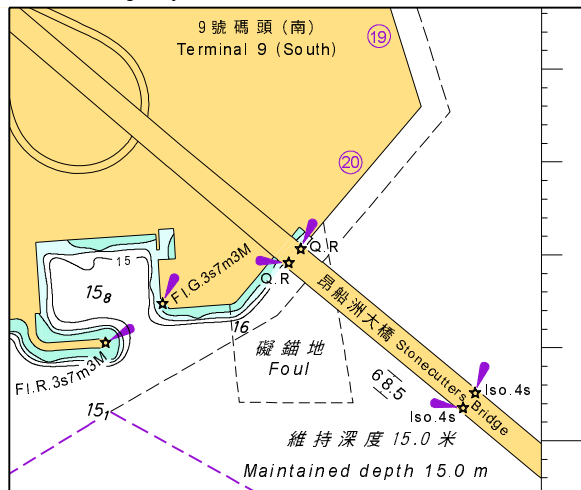
---

附隨香港航海通告編號 37/2009  
To accompany HK Notice to Mariners No. 37/2009



此貼圖適用於海圖編號 HK0803  
Block for chart No. HK0803

附隨香港航海通告編號 37/2009  
To accompany HK Notice to Mariners No. 37/2009



此貼圖適用於海圖編號 HK1502  
Block for Chart No. HK1502